

WAAS Ch <b>87099</b> <b>W13A</b>	APP CRS <b>130°</b>	Rwy Ldg <b>4559</b> TDZE <b>388</b> Apt Elev <b>390</b>
--	------------------------	---

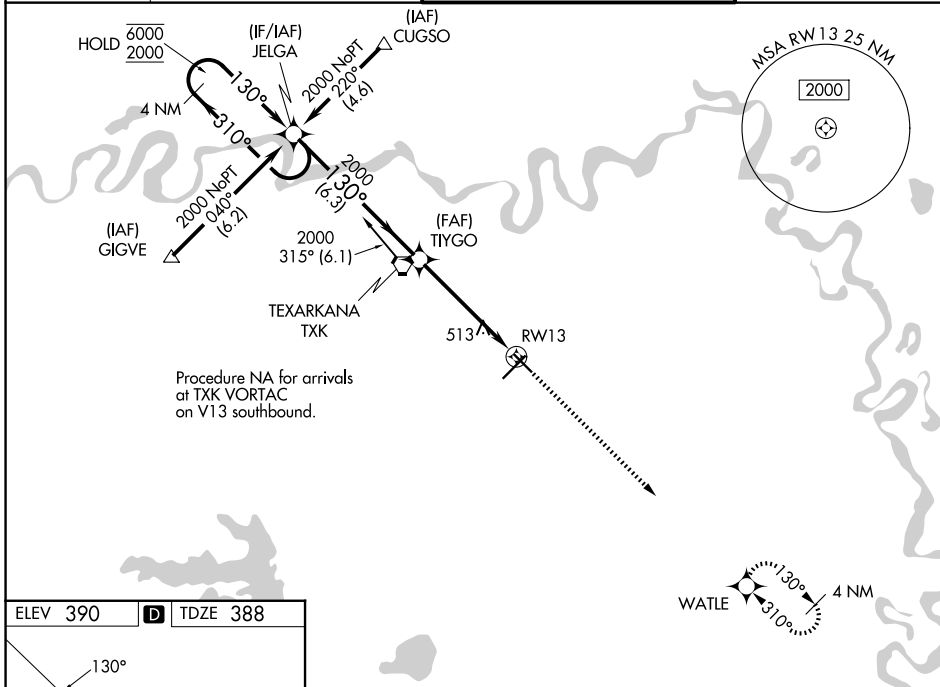
**RNAV (GPS) RWY 13**  
TEXARKANA RGNL-WEBB FLD (TXK)

RNP APCH - GPS.

**⚠** Baro-VNAV and VDP NA when using De Queen altimeter setting. Rwy 13 helicopter visibility reduction below  $\frac{3}{4}$  SM NA. For uncompensated Baro-VNAV systems, LNAV/VNAV NA below  $-1.5^{\circ}\text{C}$  or above  $54^{\circ}\text{C}$ . When local altimeter setting not received, use De Queen altimeter setting and increase LPV DA to 748 feet and all Cats visibility  $\frac{1}{4}$  SM, LNAV/VNAV DA to 868 feet all Cats visibility  $\frac{3}{8}$  SM, and all MDAs 100 feet and LNAV and Circling Cats C/D visibility  $\frac{1}{4}$  SM.

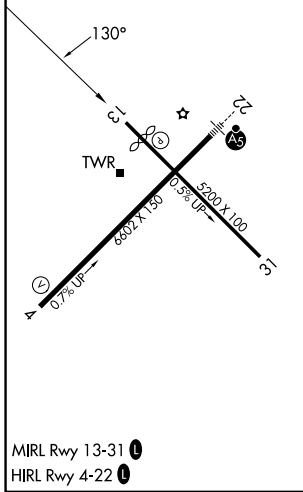
**MISSED APPROACH:**  
Climb to 2000 direct WATLE and hold.

ATIS <b>120.2</b>	FORT WORTH CENTER <b>123.925 269.475</b>	TEXARKANA TOWER* <b>123.875 (CTAF) 235.625</b>	GND CON <b>119.225</b>
----------------------	---	---	---------------------------



Procedure NA for arrivals at TXK VORTAC on V13 southbound.

ELEV 390	<b>D</b>	TDZE 388
----------	----------	----------



MIRL Rwy 13-31 **0**  
MIRL Rwy 4-22 **0**

4 NM Holding Pattern	JELGA	TIYGO	2000	WATLE
6000 2000	← 310° 130° →	130°	2000	↑
GP 3.00° TCH 54			1.2 NM to RWY 13	
	6.3 NM	3.8 NM	1.2 NM	
CATEGORY	A	B	C	D
LPV DA		648- $\frac{3}{4}$	260 (300- $\frac{3}{4}$ )	
LNAV/VNAV DA		768-1	380 (400-1)	
LNAV MDA	780-1	392 (400-1)	780- $\frac{1}{8}$	392 (400- $\frac{1}{8}$ )
CIRCLING	820-1 430 (500-1)	900-1 510 (600-1)	1000- $\frac{1}{4}$ 610 (700- $\frac{1}{4}$ )	1080- $\frac{1}{4}$ 690 (700- $\frac{1}{4}$ )

SC-1, 11 JUN 2026 to 09 JUL 2026

SC-1, 11 JUN 2026 to 09 JUL 2026