

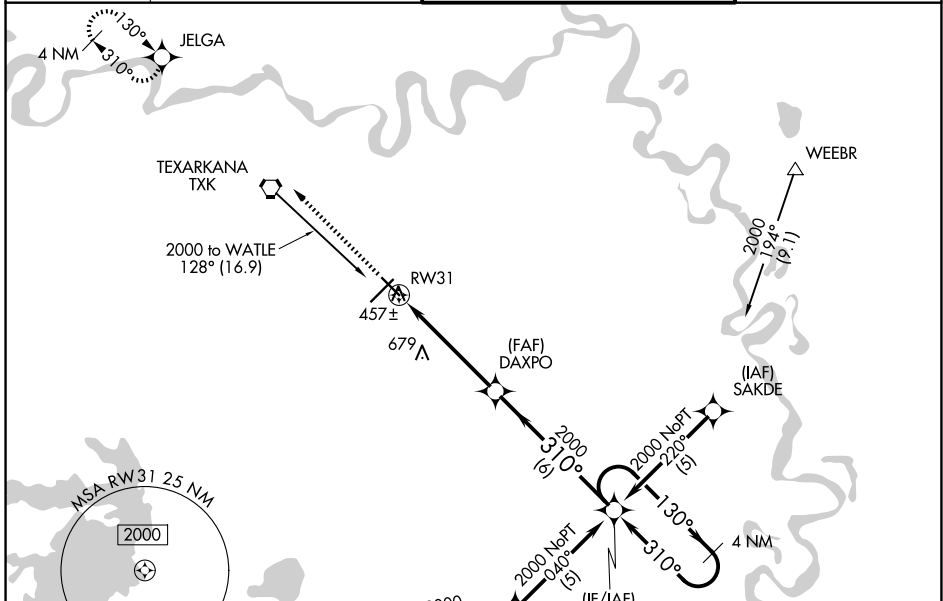
WAAS Ch <b>49199</b> <b>W31A</b>	APP CRS <b>310°</b>	Rwy Ldg <b>4559</b> TDZE <b>390</b> Apt Elev <b>390</b>
--	------------------------	---

# RNAV (GPS) RWY 31

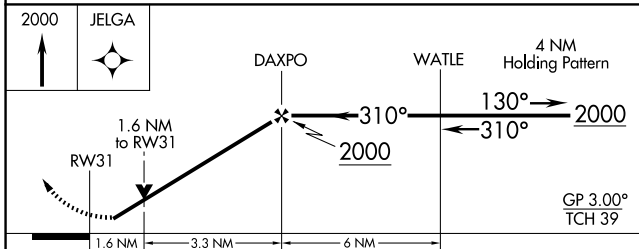
TEXARKANA RGNL-WEBB FLD (TXK)

RNP APCH-GPS. ▼ Rwy 31 helicopter visibility reduction below 3/4 SM NA. For uncompensated Baro-VNAV systems, LNAV/VNAV NA below -15°C or above 54°C. When local altimeter setting not received, use De Queen altimeter setting and increase all DA/MDA 100 feet, increase LPV and LNAV/VNAV all Cats, and LNAV Cat C and D visibility 1/4 SM, and Circling Cat C and D visibility 1/4 SM. Baro-VNAV and VDP NA when using De Queen altimeter setting.	MISSED APPROACH: Climb to 2000 direct JELGA and hold.
--	--

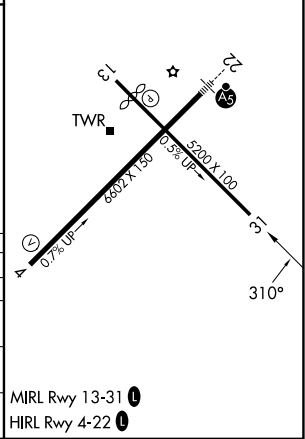
ATIS <b>120.2</b>	FORT WORTH CENTER <b>123.925 269.475</b>	TEXARKANA TOWER★ <b>123.875 (CTAF) 0 235.625</b>	GND CON <b>119.225</b>
----------------------	---	---	---------------------------



ELEV 390	TDZE 390
----------	----------



CATEGORY	A	B	C	D
LPV DA	645-1 255 (300-1)			
LNAV/VNAV DA	707-1 1/4 317 (400-1 1/4)			
LNAV MDA	920-1 530 (600-1)	920-1 1/2 530 (600-1 1/2)	920-1 3/4 530 (600-1 3/4)	
CIRCLING	920-1 530 (600-1)	1000-1 3/4 610 (700-1 3/4)	1080-2 1/4 690 (700-2 1/4)	



SC-1, 11 JUN 2026 to 09 JUL 2026

SC-1, 11 JUN 2026 to 09 JUL 2026