

WAAS CH <b>65934</b> <b>W03A</b>	APP CRS <b>035°</b>	Rwy Ldg TDZE Apt Elev	<b>7001</b> <b>1078</b> <b>1078</b>
--	------------------------	-----------------------------	---

# RNAV (GPS) RWY 3

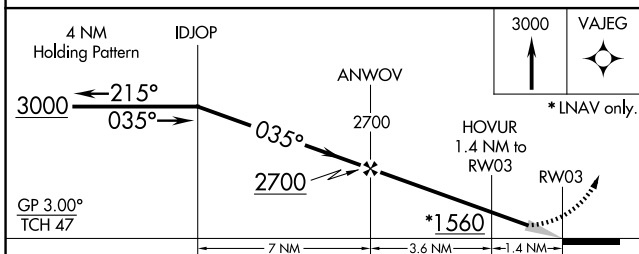
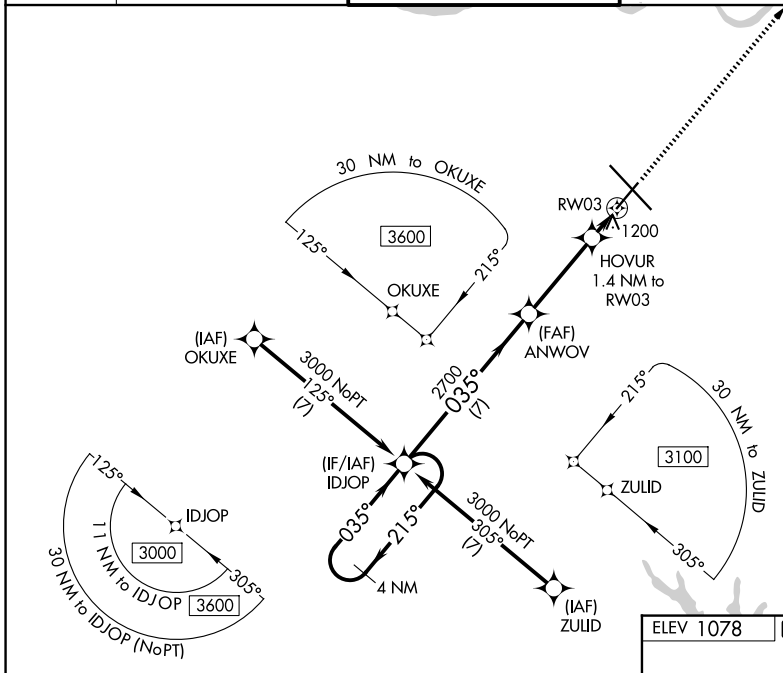
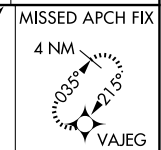
TOPEKA RGNL (F0E)

RNP APCH - GPS.

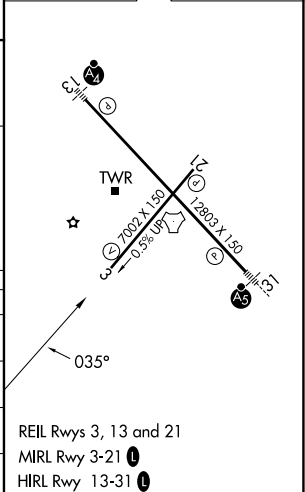
**▼** Baro-VNAV NA when using Philip Billard Muni altimeter setting. For uncompensated Baro-VNAV systems, LNAV/VNAV NA below -19°C or above 54°C. When local altimeter setting not received, use Philip Billard Muni altimeter setting and increase all DA 45 feet and all MDA 60 feet, increase LPV all Cats and LNAV/VNAV all Cats visibility ¼ mile, LNAV Cat C/D and Circling Cat D visibilities ¼ mile.

**MISSED APPROACH:**  
Climb to 3000 direct VAJEG and hold.

ATIS <b>128.25</b>	KANSAS CITY CENTER <b>123.8 343.7</b>	FORBES TOWER* <b>120.8 (CTAF) 340.2</b>	GND CON <b>118.425 275.8</b>	UNICOM <b>122.95</b>
-----------------------	--	--	---------------------------------	-------------------------



ELEV 1078	<b>D</b> TDZE 1078
-----------	--------------------



CATEGORY	A	B	C	D
LPV DA		1328-¾	250 (300-¾)	
LNAV/VNAV DA		1363-7/8	285 (300-7/8)	
LNAV MDA	1460-1	382 (400-1)	1460-1½	382 (400-1½)
CIRCLING	1520-1 442 (500-1)	1580-1 502 (600-1)	1580-1½ 502 (600-1½)	1700-2 622 (700-2)

REIL Rwy 3, 13 and 21  
MIRL Rwy 3-21 **1**  
HIRL Rwy 13-31 **1**

NC-2, 11 JUN 2026 to 09 JUL 2026

NC-2, 11 JUN 2026 to 09 JUL 2026