

TACAN FOE Chan 53 (111.6)	APP CRS 304°	Rwy Ldg TDZE 1037 Apt Elev 1078
---	------------------------	---

TACAN RWY 31

TOPEKA RGNL (F^{OE}E)

NA For inoperative ALS, increase S-31 Cats C/D/E visibility to 1 3/8 SM.	MALSR 	MISSED APPROACH: Climbing left turn to 3000 heading 190° and on FOE TACAN R-213 to STANC/19 DME and hold.
---	-----------	---

ATIS 128.25	KANSAS CITY CENTER 123.8 343.7	FORBES TOWER* 120.8 (CTAF) 340.2	GND CON 118.425 275.8	UNICOM 122.95
-----------------------	--	--	---------------------------------	-------------------------

NOT FOR CIVIL USE

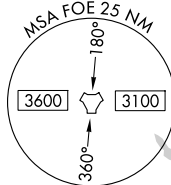
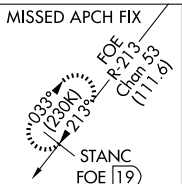
TOPEKA
117.8 TOP
Chan 125

FORBES
Chan 53
FOE
(111.6)

BUMKE
FOE
0.8

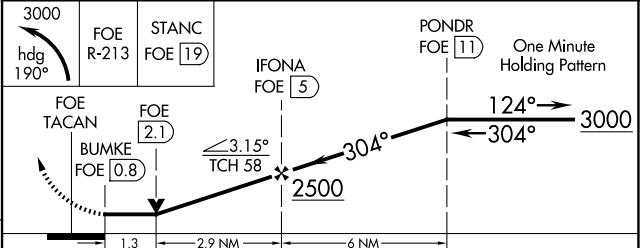
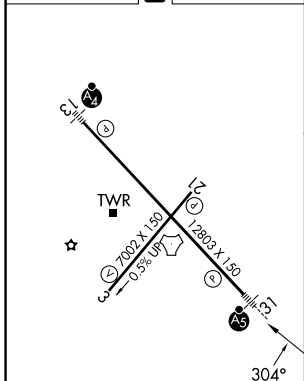
IFONA
FOE
5

(IF/IAF)
PONDR
FOE
11



Emergency Safe Altitude 100 NM 3600

ELEV 1078 **D** TDZE 1037



CATEGORY	A	B	C	D	E
S-31	1500/24	463 (500-1/2)	1500/50	463 (500-1)	
CIRCLING	1520-1 442 (500-1)	1580-1 502 (600-1)	1580-1 1/2 502 (600-1 1/2)	1700-2 622 (700-2)	1720-2 1/4 642 (700-2 1/4)

REIL Rws 3, 13 and 21
MIRL Rwy 3-21
HIRL Rwy 13-31

TOPEKA, KANSAS
Amdt 4A 05JAN17

38°57'N-95°40'W

TACAN RWY 31

NC-2, 11 JUN 2026 to 09 JUL 2026

NC-2, 11 JUN 2026 to 09 JUL 2026