

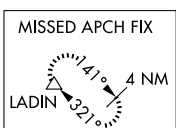
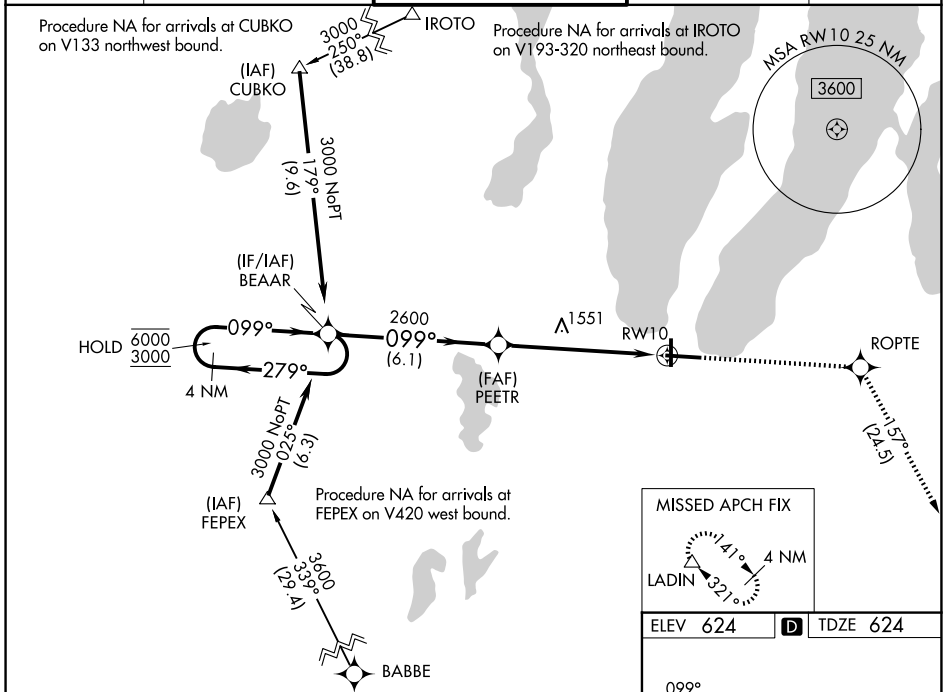
WAAS CH 42610 W10A	APP CRS 099°	Rwy Ldg TDZE 624 Apt Elev 624	7016
--	------------------------	---	-------------

RNAV (GPS) RWY 10

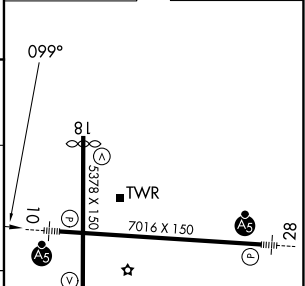
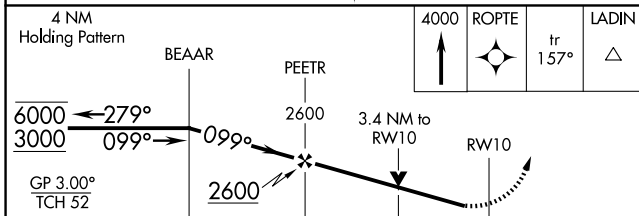
CHERRY CAPITAL (TVC)

RNP APCH - GPS.		MALSR	MISSED APPROACH: Climb to 4000 direct ROPTe and on track 1.57° to LADIN and hold.
Rwy 10 helicopter visibility reduction below 3/4 SM NA. For uncompensated Baro-VNAV systems, LNAV/VNAV NA below -16°C or above 54°C. For inop ALS, increase LPV visibility all Cats to 7/8 SM. Inop table does not apply to LNAV/VNAV all Cats and LNAV Cats C and D.			

ATIS 119.175	MINNEAPOLIS CENTER 132.9 338.3	TRAVERSE CITY TOWER* 124.2 (CTAF) 0 348.6	GND CON 121.8 348.6	UNICOM 122.95
------------------------	--	---	-------------------------------	-------------------------



ELEV 624	TDZE 624
----------	----------



CATEGORY	A	B	C	D
LPV DA		909-3/4	285 (300-3/4)	
LNAV/VNAV DA		1780-4	1156 (1200-4)	
LNAV MDA	1780-3/4 1156 (1200-3/4)	1780-1 1156 (1200-1)	1780-3	1156 (1200-3)
CIRCLING	1780-1 1/4 1156 (1200-1 1/4)	1780-1 1/2 1156 (1200-1 1/2)	1780-3	1156 (1200-3)

HIRL Rwy 10-28
MIRL Rwy 18-36

EC-1, 11 JUN 2026 to 09 JUL 2026

EC-1, 11 JUN 2026 to 09 JUL 2026