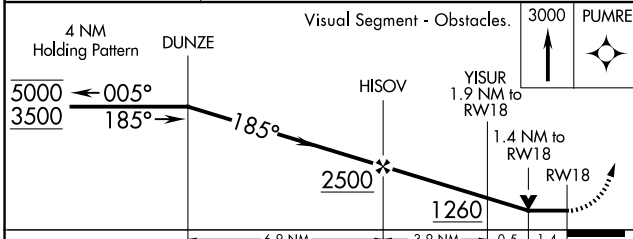
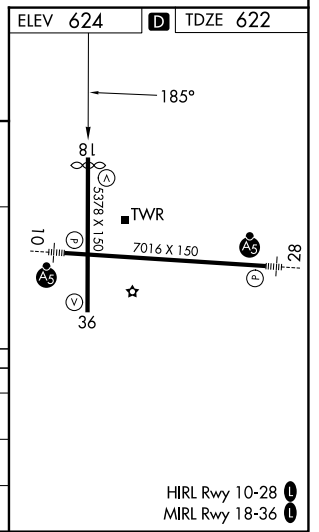
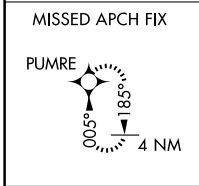
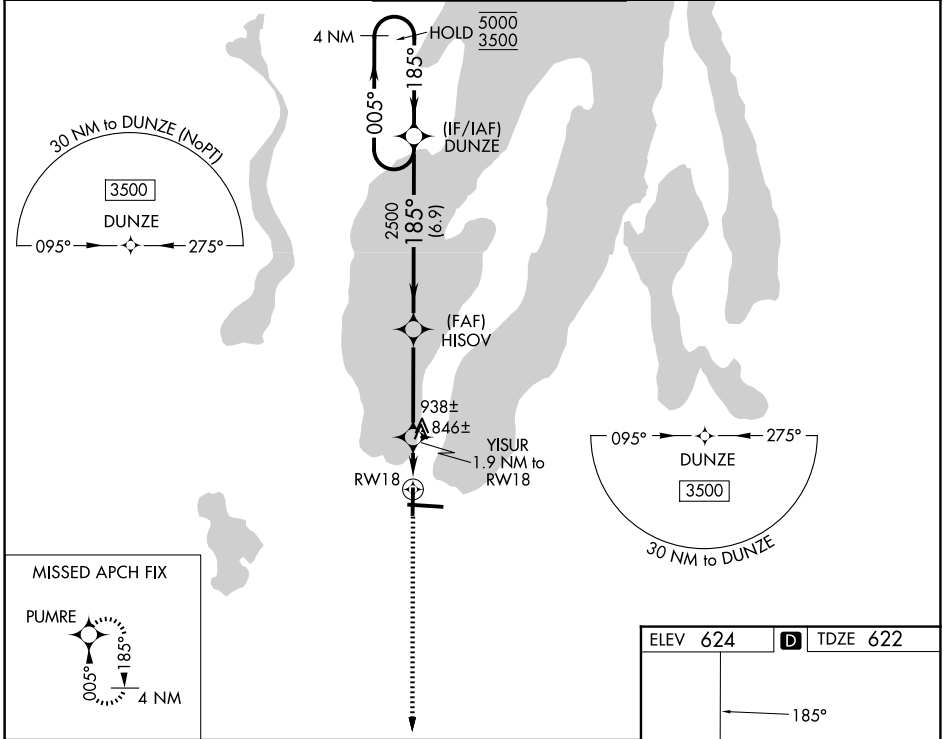


WAAS CH 90335 W18A	APP CRS 185°	Rwy Ldg TDZE 622 Apt Elev 624
--	------------------------	---

RNAV (GPS) RWY 18

CHERRY CAPITAL (TVC)

RNP APCH - GPS.		MISSED APPROACH: Climb to 3000 direct PUMRE and hold.	
ATIS 119.175	MINNEAPOLIS CENTER 132.9 338.3	TRAVERSE CITY TOWER* 124.2 (CTAF) 348.6	GND CON 121.8 348.6
		UNICOM 122.95	



CATEGORY	A	B	C	D
LP MDA	1100-1	478 (500-1)	1100-1 $\frac{3}{8}$	478 (500-1 $\frac{3}{8}$)
LNAV MDA	1200-1	578 (600-1)	1200-1 $\frac{5}{8}$	578 (600-1 $\frac{5}{8}$)
CIRCLING	1200-1 576 (600-1)	1260-1 636 (700-1)	1500-2 $\frac{1}{2}$ 876 (900-2 $\frac{1}{2}$)	1720-3 1096 (1100-3)

EC-1, 11 JUN 2026 to 09 JUL 2026

EC-1, 11 JUN 2026 to 09 JUL 2026