

WAAS CH <b>53733</b> <b>W36A</b>	APP CRS <b>005°</b>	Rwy Ldg TDZE Apt Elev	<b>5108</b> <b>624</b> <b>624</b>
----------------------------------------	------------------------	-----------------------------	-----------------------------------------

# RNAV (GPS) RWY 36

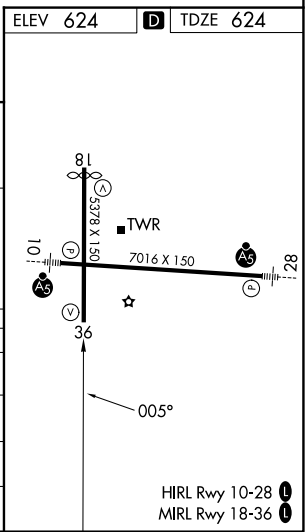
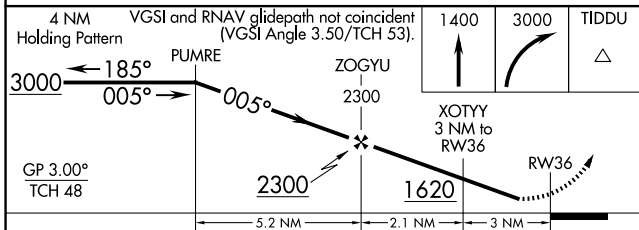
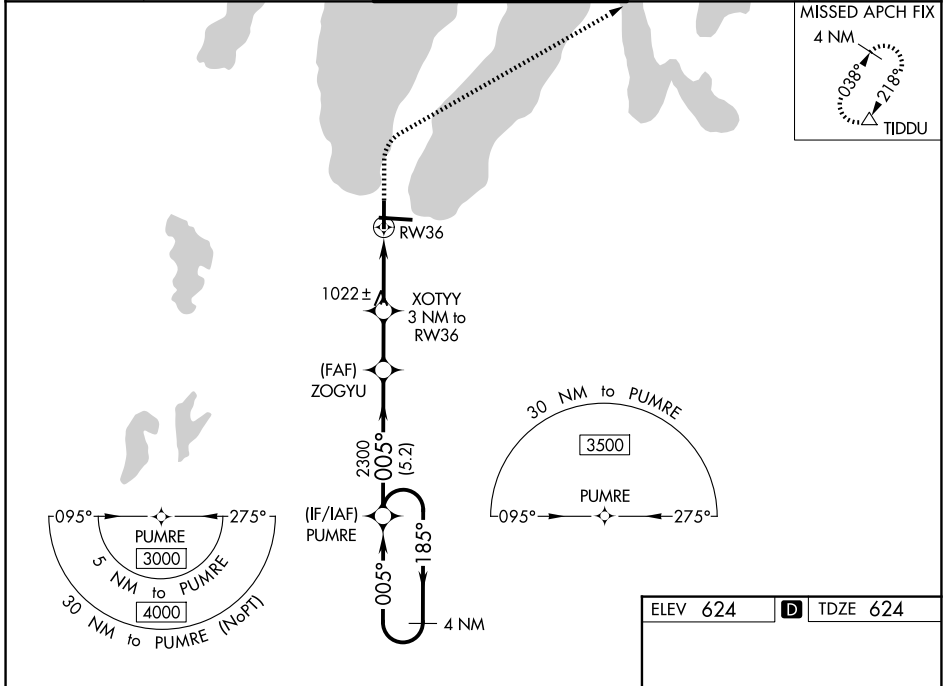
CHERRY CAPITAL (TVC)

RNP APCH - GPS.

**⚠** Baro-VNAV NA when using ACB altimeter setting. For uncompensated Baro-VNAV systems, LNAV/VNAV NA below -16°C or above 54°C. When local altimeter setting not received use ACB altimeter setting: increase all DA 51 feet and all MDA 60 feet, increase LNAV/VNAV all Cats and Circling Cat C visibilities ¼ SM, and increase LPV all Cats, LNAV Cat C/D and Circling Cat D visibilities ½ SM. Helicopter visibility reduction below ¼ SM NA.

**MISSED APPROACH:**  
Climb to 1400 then climbing right turn to 3000 direct TIDDU and hold.

ATIS <b>119.175</b>	MINNEAPOLIS CENTER <b>132.9 338.3</b>	TRAVERSE CITY TOWER * <b>124.2(CTAF) 0 348.6</b>	GND CON <b>121.8 348.6</b>	UNICOM <b>122.95</b>
------------------------	------------------------------------------	-----------------------------------------------------	-------------------------------	-------------------------



CATEGORY	A	B	C	D
LPV DA	899-7/8		275 (300-7/8)	
LNAV/VNAV DA	1146-1 3/4		522 (600-1 3/4)	
LNAV MDA	1280-1 656 (700-1)		1280-1 7/8 656 (700-1 7/8)	
CIRCLING	1280-1 656 (700-1)		1500-2 1/2 876 (900-2 1/2) 1720-3 1096 (1100-3)	

EC-1, 11 JUN 2026 to 09 JUL 2026

EC-1, 11 JUN 2026 to 09 JUL 2026