

APP CRS <b>215°</b>	Rwy Ldg TDZE Apt Elev	<b>5500</b> <b>5757</b> <b>5762</b>
------------------------	-----------------------------	---

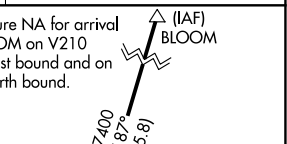
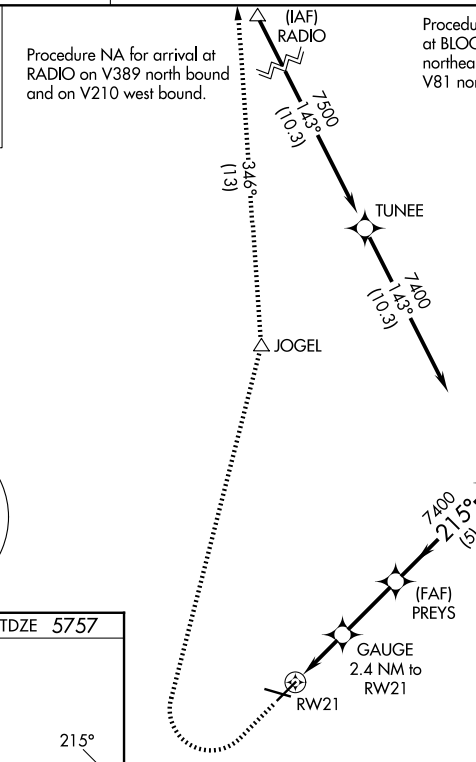
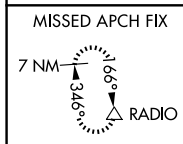
# RNAV (GPS) RWY 21

PERRY STOKES (TAD)

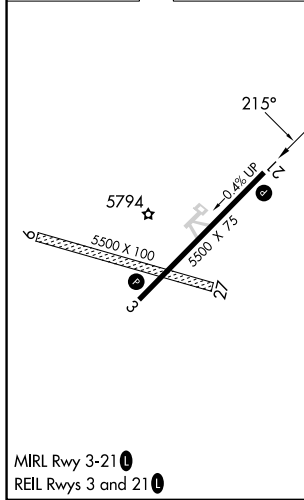
**⚠** Circling NA to Rwy 9 and 27. DME/DME RNP-0.3 NA. When local altimeter setting not received, use Pueblo altimeter setting and increase all MDA 300 feet: increase LNAV Cat C/D visibility ½ SM, Circling Cat B/D visibility ¼ SM and Circling Cat C visibility 1 SM. VDP NA when using Pueblo altimeter setting.

**⚠** MISSED APPROACH: Climb to 6200 then climbing right turn to 10000 direct JOGEL and on track 346° to RADIO and hold.

ASOS <b>119.025</b>	DENVER CENTER <b>128.375 379.95</b>	UNICOM <b>122.8 (CTAF)</b>
------------------------	--	-------------------------------



ELEV 5762	TDZE 5757
-----------	-----------



6200	10000	JOGEL	tr 346°	RADIO	PREYS	GOERS
↑	↷	△	△	△		
		Gauge 2.4 NM to RW21		≤ 3.00° TCH 40	7400	7400
		0.8 NM to RW21	0.8 NM	1.6 NM	2.7 NM	5 NM
CATEGORY	A		B		C	D
LNAV MDA	6020-1 263 (300-1)					
CIRCLING	6180-1 418 (500-1)	6300-1 538 (600-1)	6340-1½ 578 (600-1½)	6580-2¾ 818 (900-2¾)		

SW-1, 11 JUN 2026 to 09 JUL 2026

SW-1, 11 JUN 2026 to 09 JUL 2026