

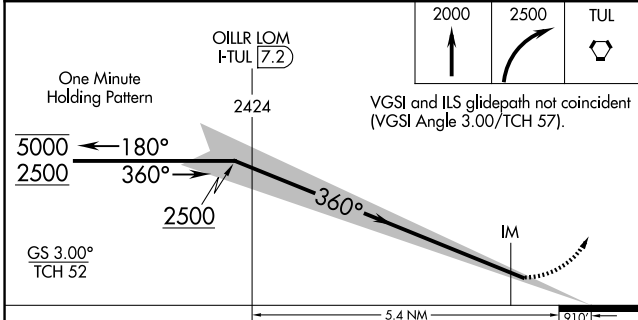
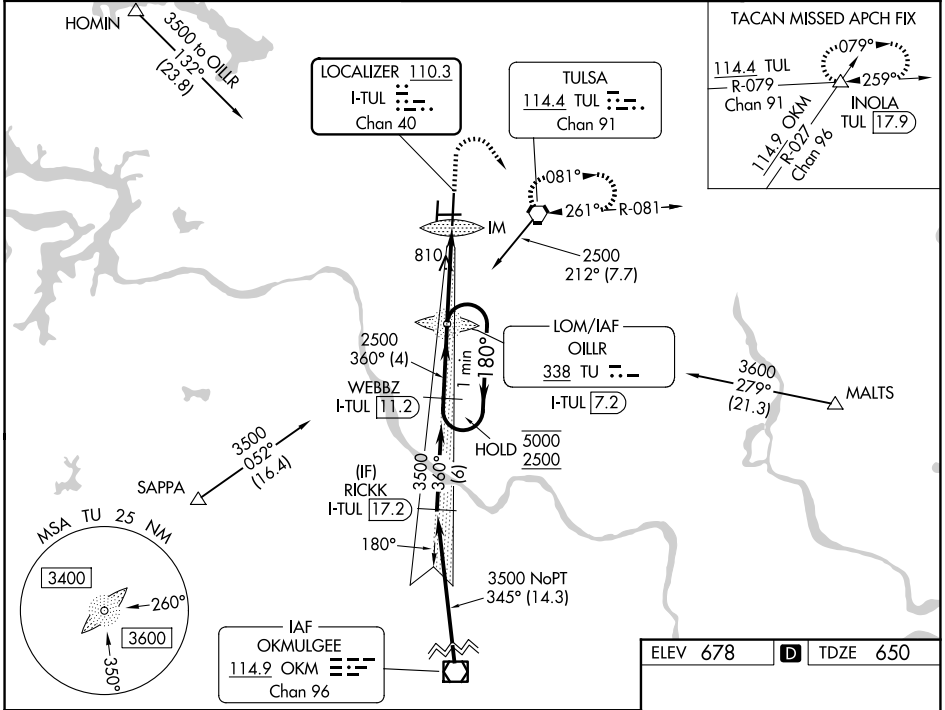
LOC/DME I-TUL 110.3 Chan 40	APP CRS 360°	Rwy Ldg 10000 TDZE 650 Apt Elev 678
--	------------------------	--

ILS RWY 36R (CAT II)

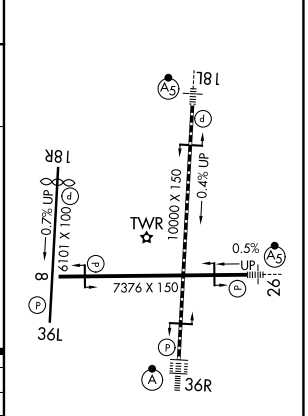
TULSA INTL (TUL)

ADF or DME required for procedure entry.	ALSF-2 	MISSED APPROACH: Climb to 2000 then climbing right turn to 2500 direct TUL VORTAC and hold. (TACAN aircraft climb to 2000 then climbing right turn to 3500 via TUL VORTAC R-079 to INOLA INT/17.9 DME and hold E, RT, 259° inbound).
ASR Simultaneous approach authorized.		

D-ATIS 124.9 377.2	TULSA APP CON 124.0 338.3	TULSA TOWER 121.2 310.8 (08/26, 18L/36R) 118.7 257.8 (18R/36L)	GND CON 121.9 348.6
------------------------------	-------------------------------------	--	-------------------------------



ELEV 678	D TDZE 650
----------	-------------------



CATEGORY	A	B	C	D
S-ILS 36R		RA 116/12 100 DA 750		

CATEGORY II ILS-SPECIAL AIRCREW & AIRCRAFT CERTIFICATION REQUIRED

TDZ/CL Rwy 36R
HIRL Rwys 8-26, 18L-36R and 18R-36L
REIL Rwys 8, 18R and 36L

SC-1, 11 JUN 2026 to 09 JUL 2026

SC-1, 11 JUN 2026 to 09 JUL 2026