

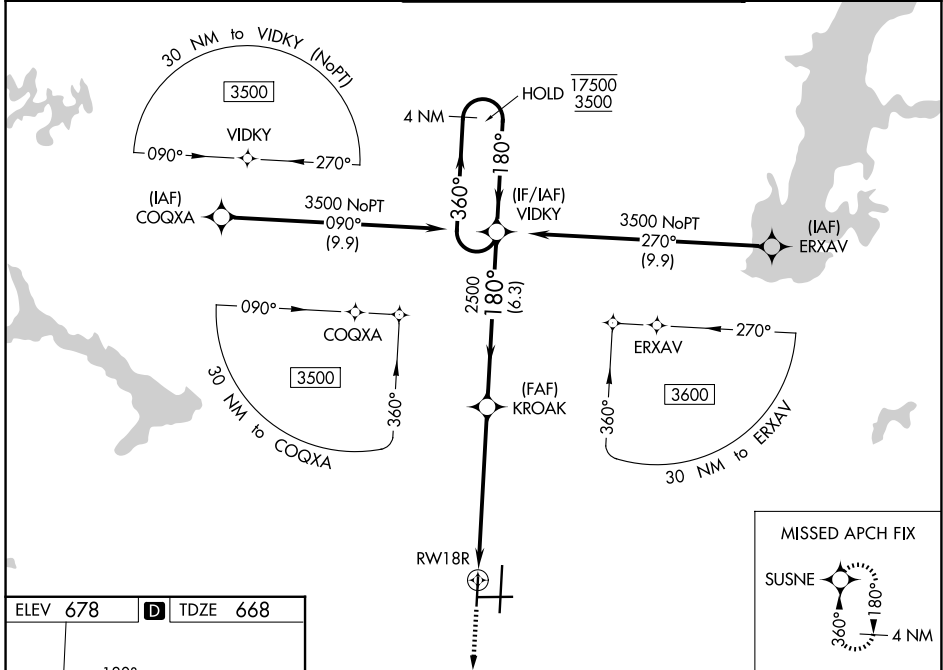
WAAS CH 69614 W18B	APP CRS 180°	Rwy Ldg 5141 TDZE 668 Apt Elev 678
--	------------------------	---

RNAV (GPS) RWY 18R

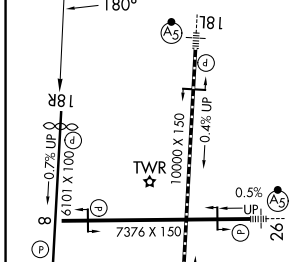
TULSA INTL (TUL)

RNP APCH - GPS.		<p>MISSED APPROACH: Climb to 3500 direct SUSNE and hold.</p>
<p>⚠ Circling NA for Cat E south of Rwy 8-26. Use of FD or AP required during simultaneous operations. For uncompleted Baro-VNAV systems, LNAV/VNAV NA below -8°C or above 54°C. ASR Simultaneous approach authorized. LNAV procedure NA during simultaneous operations.</p>		

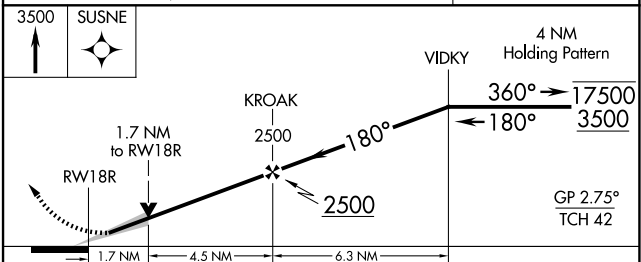
D-ATIS 124.9 377.2	TULSA APP CON 124.0 338.3	TULSA TOWER 121.2 310.8 (08/26, 18L/36R) 118.7 257.8 (18R/36L)	GND CON 121.9 348.6
------------------------------	-------------------------------------	--	-------------------------------



ELEV 678	D	TDZE 668
-----------------	----------	-----------------



TDZ/CL Rwy 36R	822 (900-2½)	842 (900-2¾)	842 (900-3)
HIRL Rwy 8-26, 18L-36R and 18R-36L	1500-2½	1520-2¾	1520-3
REIL Rwy 8, 18R and 36L	1180-1	512 (600-1)	1180-1 3/8 512 (600-1 3/8)



CATEGORY	A	B	C	D	E
LPV DA	868-¾		200 (200-¾)		
LNAV/VNAV DA	954-7/8		286 (300-7/8)		
LNAV MDA	1180-1 512 (600-1)		1180-1 3/8 512 (600-1 3/8)		
CIRCLING	1180-1 502 (600-1)		1500-2½ 1520-2¾ 1520-3 822 (900-2½) 842 (900-2¾) 842 (900-3)		

SC-1, 11 JUN 2026 to 09 JUL 2026

SC-1, 11 JUN 2026 to 09 JUL 2026