

WAAS CH <b>82214</b> W36A	APP CRS <b>360°</b>	Rwy Ldg <b>10000</b> TDZE <b>650</b> Apt Elev <b>678</b>
---------------------------------	------------------------	--

# RNAV (GPS) RWY 36R

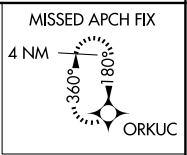
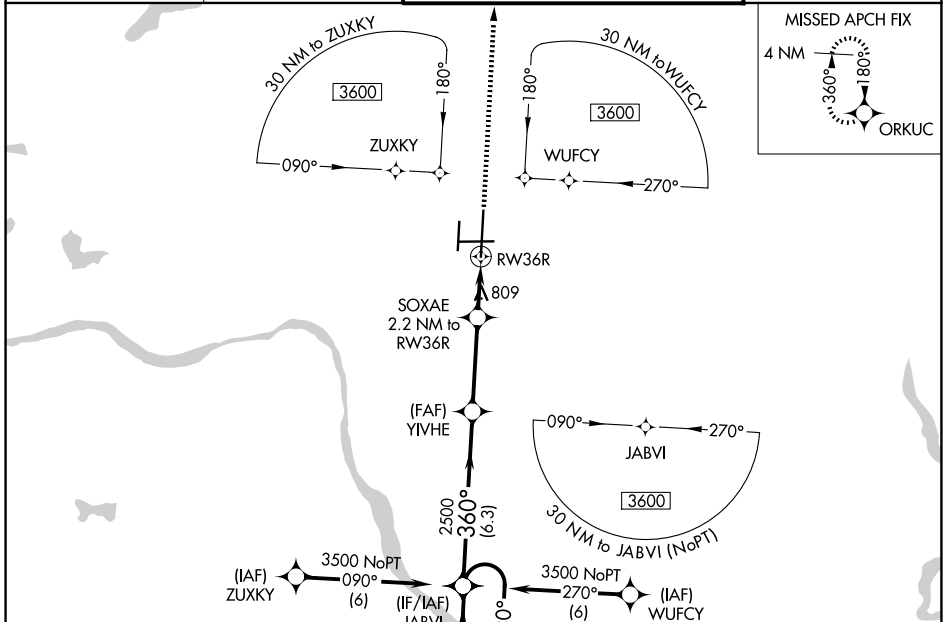
TULSA INTL (TUL)

**ASR** For uncompensated Baro-VNAV systems, LNAV/VNAV NA below -13°C (9°F) or above 54°C (130°F). Circling NA for Cat E south of Rwy 8-26. DME/DME RNP-0.3 NA. For inop ALSF-2, increase LPV Cat E visibility to RVR 4000, LNAV/VNAV all Cats visibility to 1½ mile, and LNAV Cats C/D/E visibility to 1½ mile.

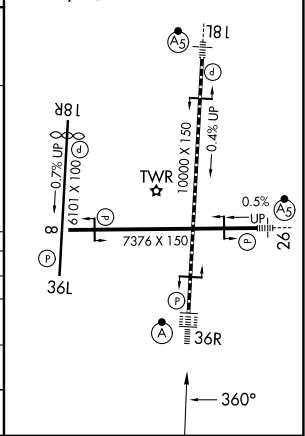
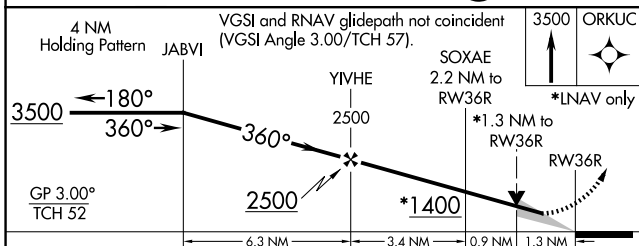
**ALSF-2**

**MISSED APPROACH:** Climb to 3500 direct ORKUC and hold.

D-ATIS <b>124.9 377.2</b>	TULSA APP CON <b>124.0 338.3</b>	TULSA TOWER <b>121.2 310.8</b> (08/26, 18L/36R) <b>118.7 257.8</b> (18R/36L)	GND CON <b>121.9 348.6</b>
------------------------------	-------------------------------------	--	-------------------------------



ELEV 678	<b>D</b> TDZE 650
TDZ/CL Rwy 36R HIRL Rwys 8-26, 18L-36R and 18R-36L REIL Rwys 8, 18R and 36L	



CATEGORY	A	B	C	D	E
LPV DA	850/18		200 (200-½)		
LNAV/VNAV DA	1145-1¼		495 (500-1¼)		
LNAV MDA	1120/24 470 (500-½)		1120/50 470 (500-1)		
CIRCLING	1120-1 442 (500-1)	1160-1 482 (500-1)	1520-2½ 842 (900-2½)	1520-2¾ 842 (900-2¾)	1520-3 842 (900-3)

SC-1, 11 JUN 2026 to 09 JUL 2026

SC-1, 11 JUN 2026 to 09 JUL 2026