

TACAN Y RWY 19L

TACAN VAD Chan 80	APCH CRS 190°	Rwy Idg 9300 TDZE 233 Arprt Elev 233
----------------------	------------------	---

[USAF]

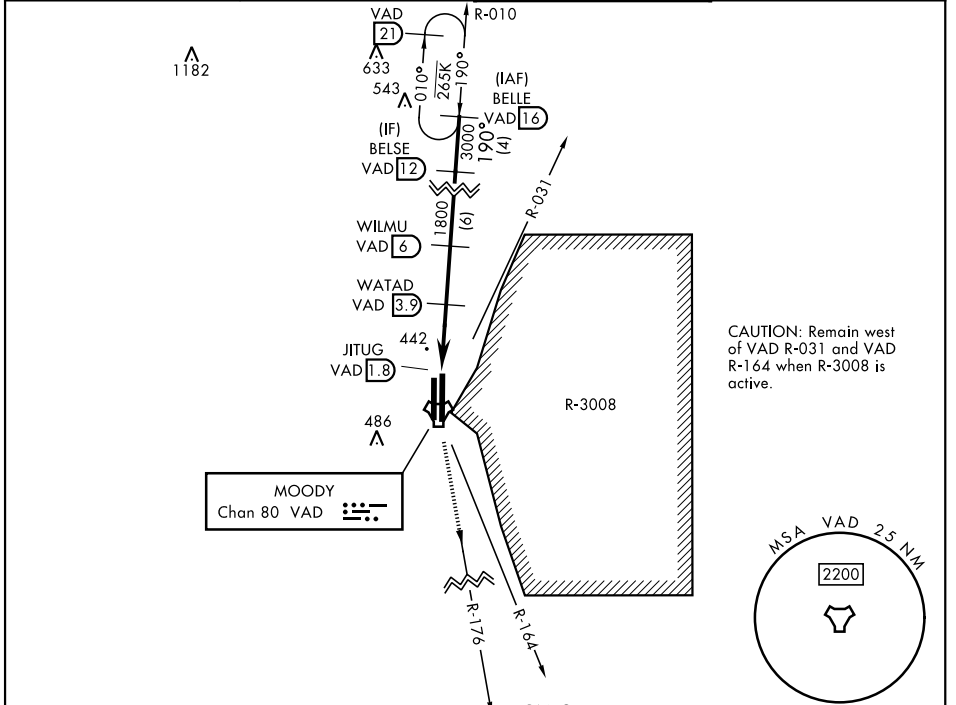
MOODY AFB (KVAD)

▼ *When ALS inop, increase CAT AB RVR to 55 and vis to 1 mile, CAT CDE vis to 1 3/8 miles.

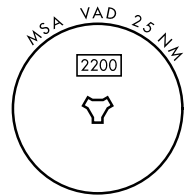
 ALSF-1
A1

 MISSED APPROACH: Climb to 3000 on VAD TACAN R-176 to CARLO and hold.

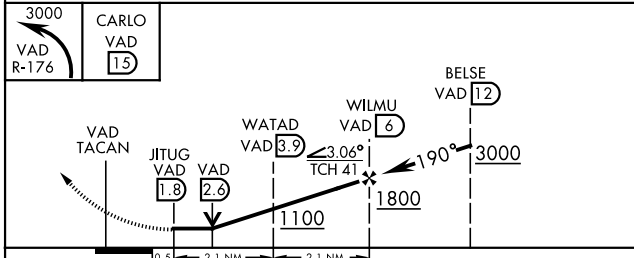
ATIS ★ 142.6 273.5	VALDOSTA APP CON ★ 126.6 285.6	TOWER ★ 128.45 (CTAF) 257.625	GND CON 138.95 275.8
------------------------------	--	---	--------------------------------



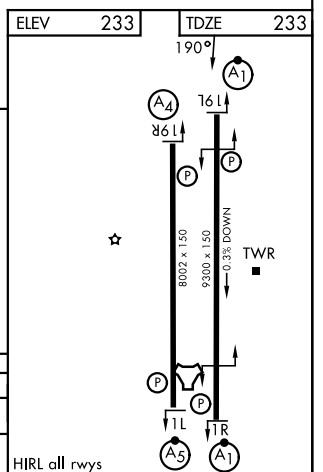
CAUTION: Remain west of VAD R-031 and VAD R-164 when R-3008 is active.



EMERG SAFE ALT 100 NM 3300



CATEGORY	A	B	C	D	E
S-19L*	700/24	467 (500-1/2)	700/50	467 (500-1)	
CIRCLING	760-1	527 (600-1)	800-1 1/2 567 (600-1 1/2)	800-2	567 (600-2)



TACAN Y RWY 19L

SE-4, 11 JUN 2026 to 09 JUL 2026

SE-4, 11 JUN 2026 to 09 JUL 2026