

VALDOSTA, GEORGIA

# TACAN Y RWY 19R

TACAN VAD Chan <b>80</b>	APCH CRS <b>183°</b>	Rwy Ildg TDZE Arprt Elev <b>8002</b> <b>231</b> <b>233</b>
-----------------------------	-------------------------	---

[USAF]

MOODY AFB (KVAD)

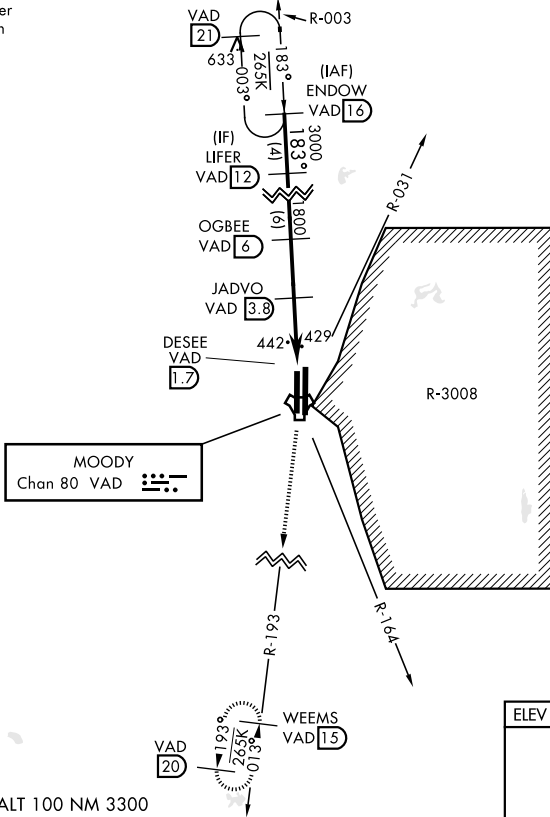
▼ \* When ALS inop, increase CAT AB RVR to 55 and vis to 1 mile, CAT CDE vis to 1½ miles.



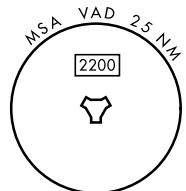
MISSED APPROACH: Climb to 3000 on VAD TACAN R-193 to WEEMS and hold.

ATIS ★ <b>142.6 273.5</b>	VALDOSTA APP CON ★ <b>126.6 285.6</b>	TOWER ★ <b>128.45 (CTAF) 257.625</b>	GND CON <b>138.95 275.8</b>
------------------------------	--	---	--------------------------------

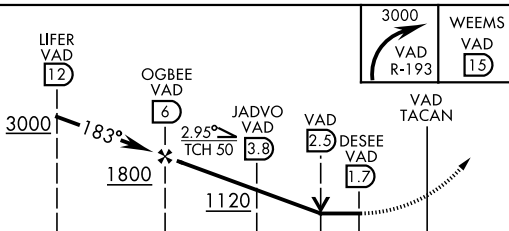
Rwy 19R helicopter visibility reduction below RVR 40 not authorized.



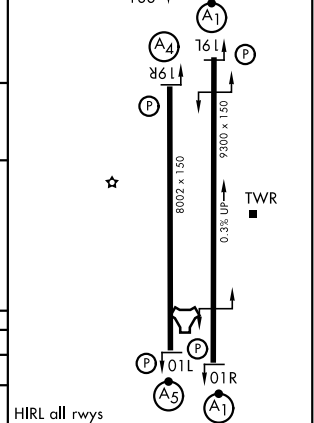
CAUTION: Remain west of VAD R-031 and VAD R-164 when R-3008 is active.



EMERG SAFE ALT 100 NM 3300



ELEV 233	TDZE 231
----------	----------



CATEGORY	A	B	C	D	E
S-19R *	700/40	469 (500-¾)	700/50	469 (500-1)	
CIRCLING	760-1	527 (600-1)	800-1½ 567 (600-1½)	800-2	567 (600-2)

HIRL all rwys

VALDOSTA, GEORGIA  
Orig 27NOV25

30°58'N-83°12'W

MOODY AFB (KVAD)

# TACAN Y RWY 19R

SE-4, 11 JUN 2026 to 09 JUL 2026

SE-4, 11 JUN 2026 to 09 JUL 2026