

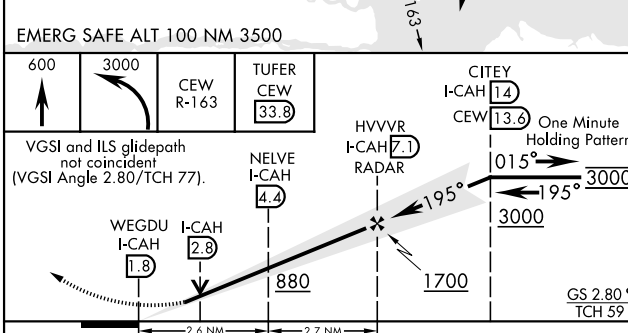
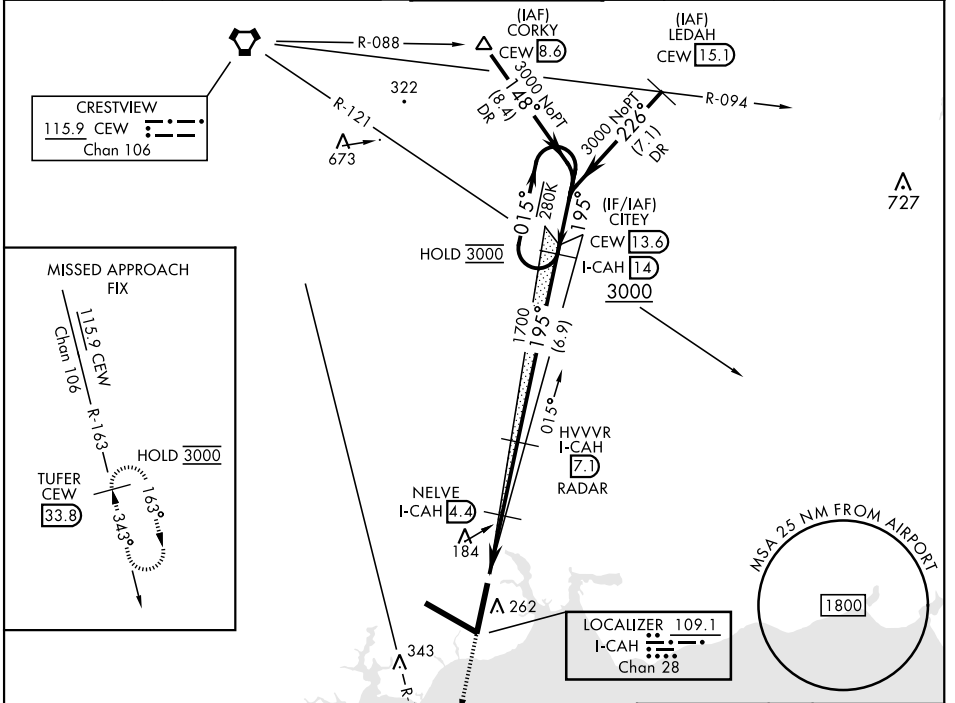
VALPARAISO DESTIN FT WALTON BEACH, FLORIDA

# ILS or LOC Z RWY 20

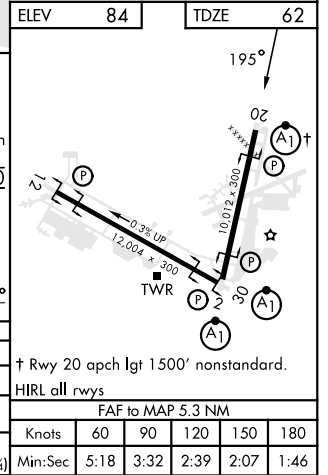
LOC/DME I-CAH <b>109.1</b> Chan <b>28</b>	APCH CRS <b>195°</b>	Rwy Idg <b>10,012</b> TDZE <b>62</b> Arprt Elev <b>84</b>
---	-------------------------	---

[USAF] EGLIN AFB DESTIN FORT WALTON BEACH (KVPS)

DME required		ALSF-1 	MISSED APPROACH: Climb to 600, then climbing left turn to 3000 on CEW VORTAC R-163 to TUFER/33.8 DME and hold.			
* When ALS inop increase RVR to 40, vis to 3/4 mile. ** When ALS inop increase RVR to 55, vis to 1 mile.		ATIS ★ <b>134.625 273.5</b>	APP CON <b>125.1 281.45 271°-089°</b> <b>132.1 360.6 090°-270°</b>	TOWER <b>118.2 353.65</b>	GND CON <b>121.8 335.8</b>	CLNC DEL <b>127.7 377.2</b>



EMERG SAFE ALT 100 NM 3500	600	3000	CEW R-163	TUFER CEW 33.8	CITEY I-CAH 14	HVVR I-CAH 7.1	One Minute Holding Pattern
VGSI and ILS glidepath not coincident (VGSI Angle 2.80/TCH 77).	WEGDU I-CAH 1.8	I-CAH 2.8	NELVE I-CAH 4.4	880	1700	GS 2.80° TCH 59	
	-2.6 NM		-2.7 NM				
CATEGORY	A	B	C	D	E		
S-ILS 20 *	262/24		200	(200-1/2)			
S-LOC 20 **	440/24	378 (400-1/2)	440/35	378	(400-3/4)		
Ⓞ CIRCLING	600-1	516 (600-1)	680-1 1/2	680-2	700-2 1/4	596 (600-1 1/2) 596 (600-2) 616 (700-2 1/4)	



VALPARAISO DESTIN FT WALTON BEACH, FLORIDA  
Orig 16MAY24

EGLIN AFB DESTIN FORT WALTON BEACH (KVPS)  
30°29'N-86°32'W

# ILS or LOC Z RWY 20

SE-3, 11 JUN 2026 to 09 JUL 2026

SE-3, 11 JUN 2026 to 09 JUL 2026

† Rwy 20 apch lgt 1500' nonstandard.	HIRL all rwys				
FAF to MAP 5.3 NM					
Knots	60	90	120	150	180
Min:Sec	5:18	3:32	2:39	2:07	1:46