

VALPARAISO DESTIN FT WALTON BEACH, FLORIDA

RNAV (GPS) RWY 30

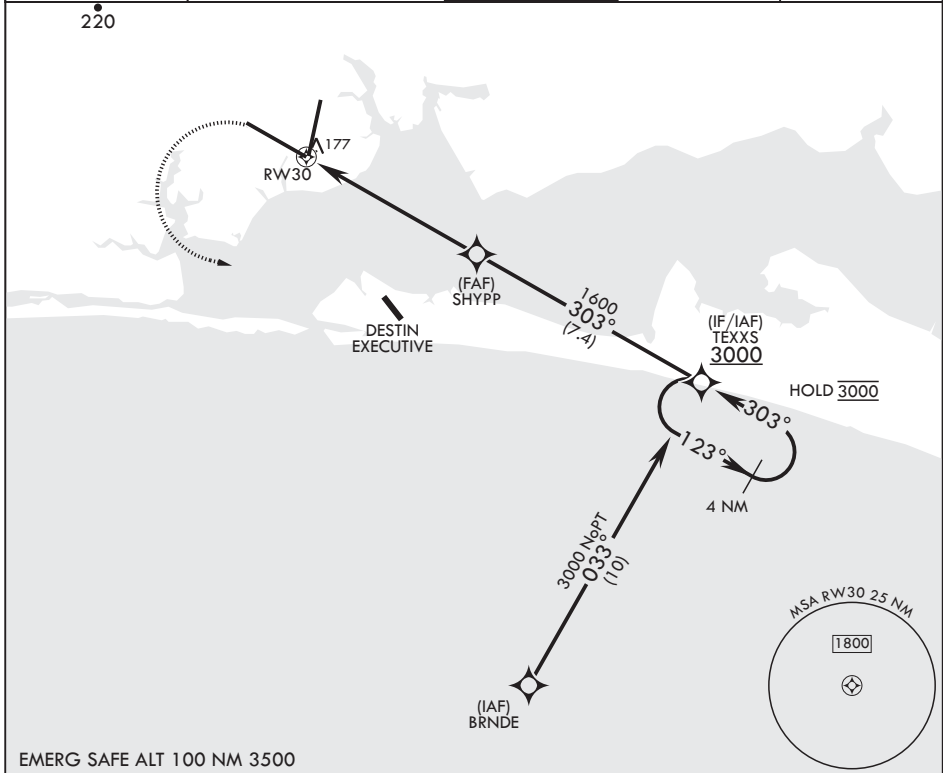
| | |
|------------------|-------------------|
| APCH CRS 303° | Rwy Idg 12,004 |
| | TDZE 68 |
| | Arprt Elev 84 |

- (USAF) EGLIN AFB DESTIN FORT WALTON BEACH (KVPS)

RNP APCH - GPS
* When ALS inop increase CAT AB RVR to 55, vis to 1 mile; CAT CDE vis to 1 1/4 miles.

ALS-F1 MISSED APPROACH: Climb to 600 then climbing left turn to 3000 direct TEXXS and hold.

| | | | | |
|------------------------|--|-----------------------|------------------------|-------------------------|
| ATIS★ 134.625 273.5 | APP CON/DEP CON 125.1 281.45 271°-089° 132.1 360.6 090°-270° | TOWER 118.2 353.65 | GND CON 121.8 335.8 | CLNC DEL 127.7 377.2 |
|------------------------|--|-----------------------|------------------------|-------------------------|



EMERG SAFE ALT 100 NM 3500

| | | | | | | |
|-----------|--------|-------------|--|----------------------|--------------------------------------|---------|
| 600 | 3000 | TEXXS | VGSI and descent angle not coincident (VGSI angle 2.5° TCH 80 ft). | 4 NM Holding Pattern | ELEV 84 | TDZE 68 |
| | | | | | † Rwy 20 apch lgt 1500' nonstandard. | |
| | | | | | | |
| CATEGORY | A | B | C | D | E | |
| LNAV MDA* | 500/24 | 432 (500-½) | 500/40 | 432 | (500-¾) | |
| CIRCLING | 600-1 | 516 (600-1) | 680-1½ 596 (600-1½) | 680-2 596 (600-2) | 700-2¼ 616 (700-2¼) | |

VALPARAISO DESTIN FT WALTON BEACH, FLORIDA

EGLIN AFB DESTIN FORT WALTON BEACH (KVPS)

Amdt 1 16MAY24

30°29'N - 86°32'W

RNAV (GPS) RWY 30

SE-3, 11 JUN 2026 to 09 JUL 2026

SE-3, 11 JUN 2026 to 09 JUL 2026