

WAAS CH 45545 W31A	APP CRS 308°	Rwy Ldg 9111 TDZE 106 Apt Elev 115
--	------------------------	---

RNAV (GPS) RWY 31

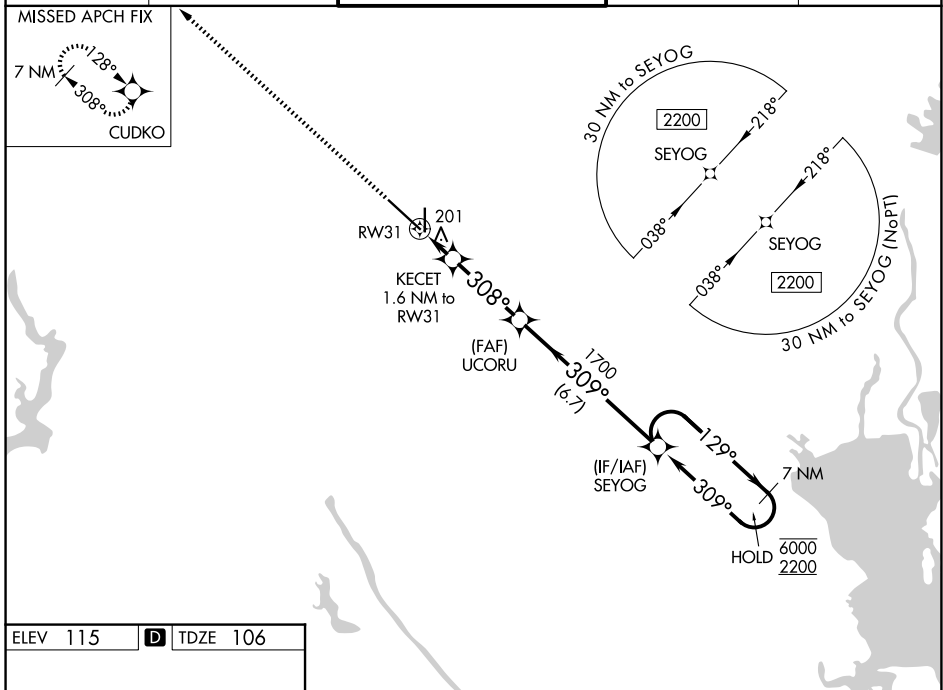
VICTORIA RGNL (VCT)

RNP APCH-GPS.

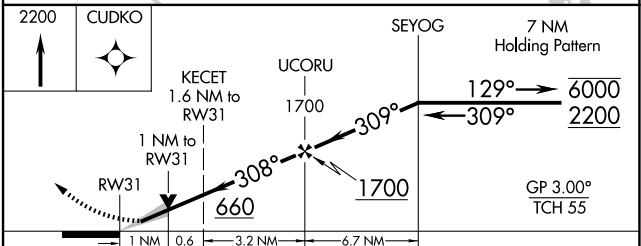
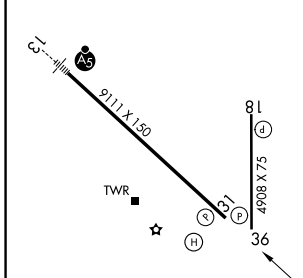
⚠ For uncompensated Baro-VNAV systems, procedure NA below -15°C or above 54°C.

MISSED APPROACH:
Climb to 2200 direct
CUDKO and hold.

ATIS 119.025	HOUSTON CENTER 135.05 353.6	VICTORIA TOWER ★ 126.075 (CTAF) 257.95	GND CON 120.525 239.25	UNICOM 122.7
------------------------	---------------------------------------	--	----------------------------------	------------------------



ELEV 115	D	TDZE 106
----------	----------	----------



CATEGORY	A	B	C	D	E
LPV DA		306- ³ / ₄	200 (200- ³ / ₄)		
LNAV/VNAV DA		374- ⁷ / ₈	268 (300- ⁷ / ₈)		
LNAV MDA		460-1	354 (400-1)		
CIRCLING	580-1	465 (500-1)	820-2 705 (800-2)	880-2½ 765 (800-2½)	NA

MIRL Rwy 18-36
REIL Rwy 18 and 36
HIRL Rwy 13-31 **Ⓛ**

SC-5, 11 JUN 2026 to 09 JUL 2026

SC-5, 11 JUN 2026 to 09 JUL 2026