

WAAS CH 65919 W01A	APP CRS 007°	Rwy Ldg TDZE 7005 511 Apt Elev 516
--	------------------------	--

RNAV (GPS) RWY 1

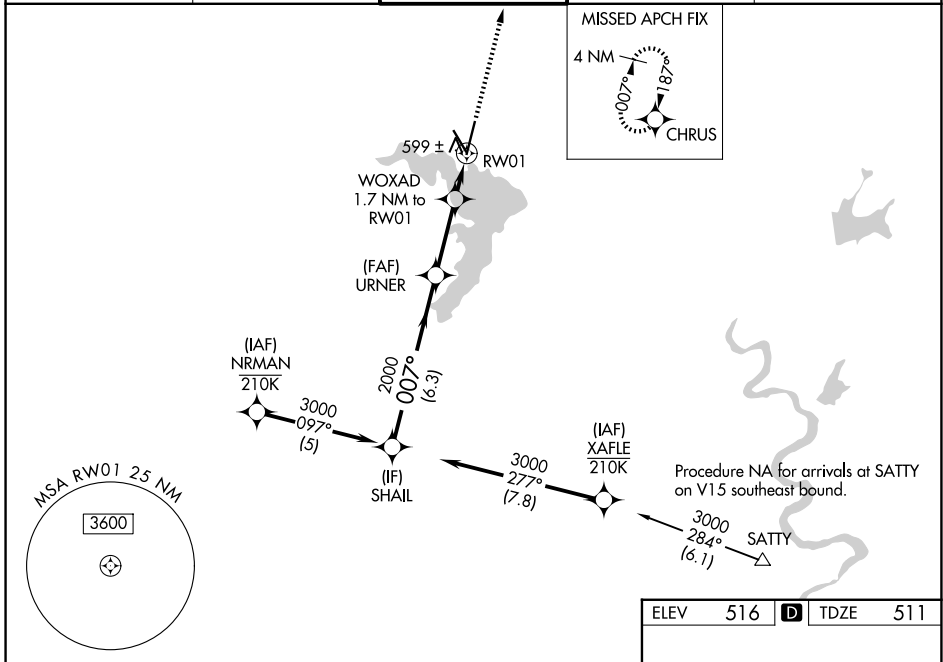
WACO RGNL (ACT)

RNP APCH - GPS.

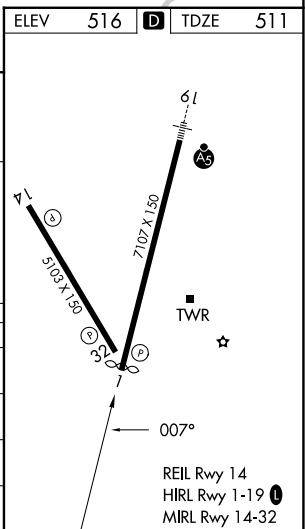
ASR For uncompensated Baro-VNAV systems, LNAV/VNAV NA below -8°C or above 54°C. Baro-VNAV and VDP NA when using PWG altimeter setting. Rwy 1 helicopter visibility reduction below 3/4 SM NA. When local altimeter setting not received, use PWG altimeter setting and increase LPV DA to 792 feet and all visibilities 1/8 SM. Increase LNAV/VNAV DA to 813 feet; increase all MDAs 40 feet and LNAV visibility Cat C/D 1/8 SM, and Circling visibility Cat D 1/4 SM.

MISSED APPROACH:
Climb to 3000 direct
CHRUS and hold.

ATIS 123.85	WACO APP CON ★ 127.65 227.125	WACO TOWER ★ 119.3 (CTAF) 0 257.8	GND CON 121.9	UNICOM 122.95
-----------------------	---	---	-------------------------	-------------------------



SHAIL	URNER	WOXAD 1.7 NM to RWY 1	CHRUS	3000
				2000
GP 3.00° TCH 55		1100	0.9 NM to RWY 1	
6.3 NM		2.8 NM	0.8 NM	0.9 NM
CATEGORY	A	B	C	D
LPV DA		761-3/4	250 (300-3/4)	
LNAV/VNAV DA		782-7/8	271 (300-7/8)	
LNAV MDA		860-1	349 (400-1)	
CIRCLING	940-1 424 (500-1)	980-1 464 (500-1)	1020-1 1/2 504 (600-1 1/2)	1160-2 644 (700-2)



SC-3, 11 JUN 2026 to 09 JUL 2026

SC-3, 11 JUN 2026 to 09 JUL 2026