

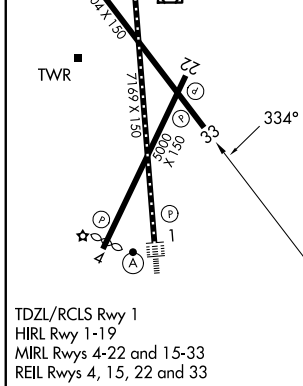
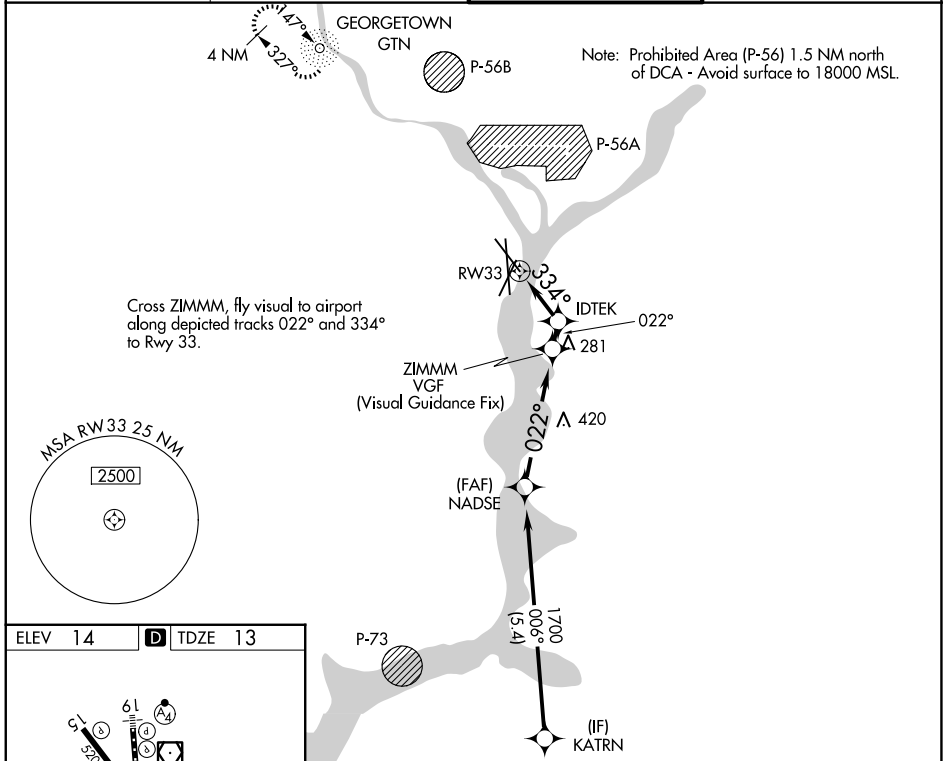
APP CRS 334°	Rwy Ldg 5204
	TDZE 13
	Apt Elev 14

RNAV (GPS) RWY 33

RONALD REAGAN WASHINGTON NTL (DCA)

RNP APCH - GPS. RADAR required.	MISSED APPROACH: (Do not exceed 210K until Rwy 33) Climb to 2200 on the FMS lateral path to Rwy 33 and direct to GTN NDB and hold, continue climb-in-hold to 2200.
⚠ Helicopter visibility reduction is not authorized.	

D-ATIS 132.65	POTOMAC APP CON 119.85 239.25 (W/S) 124.2 360.8 (E)	WASHINGTON TOWER 119.1 257.6	GND CON 121.7 257.6
-------------------------	---	--	-------------------------------



2200	GTN	VGSI and descent angles not coincident (VGSI Angle 3.00/TCH 37).		
↑				
Turn required from VGF to RWY 33.				
* Recommended altitude.				
RWY 33	IDTEK	ZIMMZ		
	* 500	* 700		
NADSE				
≤ 3.10° TCH 40				
KATR				
006° 3000				
1700				
022°				
1.4 NM	0.6 NM	3 NM		
5.4 NM				
CATEGORY	A	B	C	D
LNAV MDA	700-2½ 687 (700-2½)			

NE-3, 11 JUN 2026 to 09 JUL 2026

NE-3, 11 JUN 2026 to 09 JUL 2026