

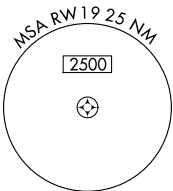
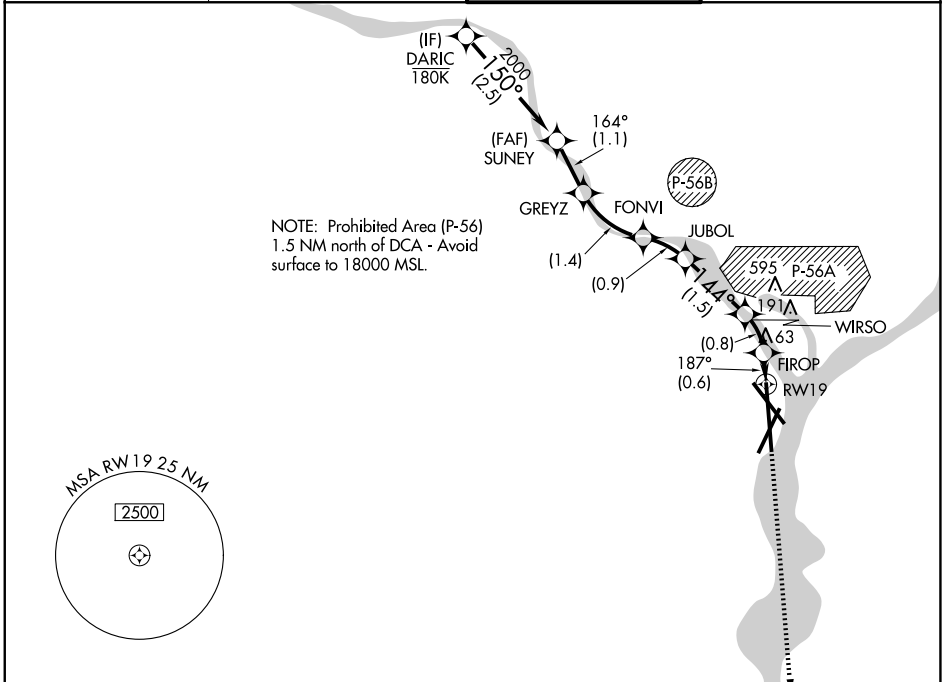
APP CRS	Rwy Ldg	6869
187°	TDZE	13
	Apt Elev	14

RNAV (RNP) Z RWY 19

RONALD REAGAN WASHINGTON NTL (DCA)

RNP AR APCH - GPS.	MALSF	MISSED APPROACH: Climb to 3000 on the final approach track to RW19 then direct BADDN and hold, continue climb-in-hold to 3000.
▼ Inop table does not apply. For uncompensated Baro-VNAV systems, procedure NA below -8°C or above 54°C.		

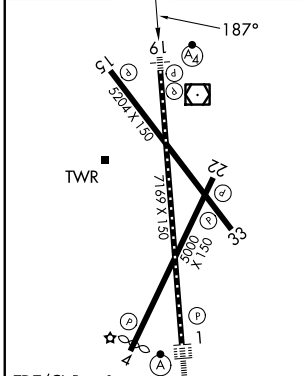
D-ATIS	POTOMAC APP CON	WASHINGTON TOWER	GND CON
132.65	119.85 239.25 (W/S) 124.2 360.8 (E)	119.1 257.6	121.7 257.6



NE-3, 11 JUN 2026 to 09 JUL 2026

NE-3, 11 JUN 2026 to 09 JUL 2026

ELEV	14	D	TDZE	13
------	----	----------	------	----



TDZ/CL Rwy 1
HIRL Rws 1-19
MIRL Rwy 4-22 and 15-33
REIL Rws 4, 22, 15 and 33

DARIC	SUNEY	GREYZ	FONVI	JUBOL	WIRSO	FIROP	BADDN
2700	2000	1666	1226	954	492	3000	Final App Tr to RW19
GP 3.00°	TCH 50						
	2.5 NM	1.1 NM	1.4 NM	0.9 NM	1.5 NM	0.8 NM	0.6 NM

CATEGORY	A	B	C	D
RNP 0.11 DA		491/60	478 (500-1¼)	
RNP 0.30 DA		550-1½	537 (600-1½)	

AUTHORIZATION REQUIRED