


APP CRS	Rwy Ldg	6869
187°	TDZE	13
	Apt Elev	14

RNAV (GPS) Y RWY 19

RONALD REAGAN WASHINGTON NTL (DCA)

RNP APCH - GPS.
 RADAR required.
 ▼
 ▲ Rwy 19 helicopter visibility reduction below ¾ SM NA. Inop table does not apply.

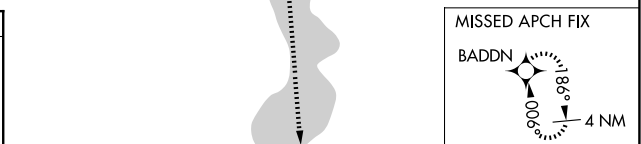
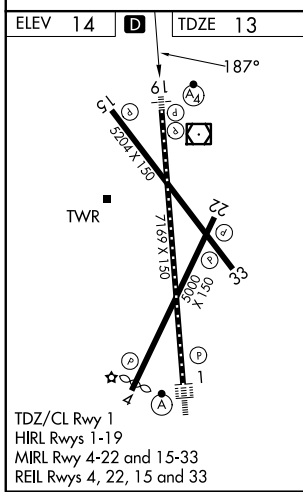
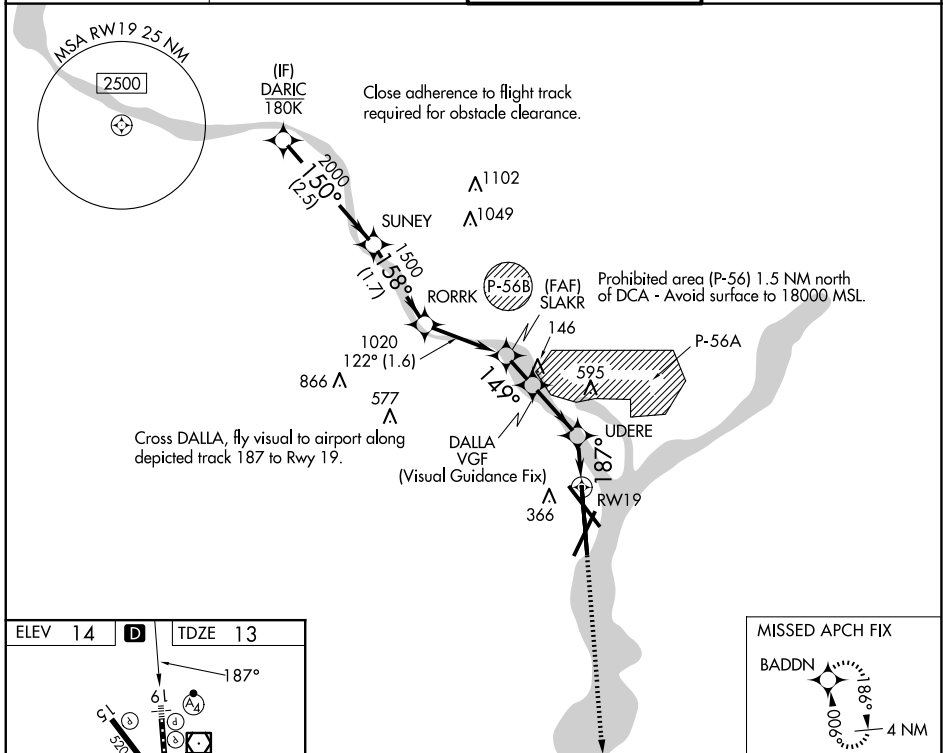
MALSF 
 MISSED APPROACH: (Do not exceed 165K until Rwy 19) Climb to 3000 on FMS lateral path to Rwy 19, then direct BADDN and hold, continue climb-in-hold to 3000. If unable to follow the FMS lateral path, climb to 3000 and turn to heading 187° direct BADDN and hold, continue climb-in-hold to 3000.

D-ATIS
132.65

POTOMAC APP CON
119.85 239.25 (W/S)
124.2 360.8 (E)

WASHINGTON TOWER
119.1 257.6

GND CON
121.7 257.6



3000	FMS Lateral to RWY19	BADDN	*Check altitude. Turns required in the visual segment.						
DARIC	SUNEY	RORRK	SLAKR	DALLA	UDERE	RWY19			
2700	150°	2000	158°	122°	1020	149°	*780	*373	
	2.5 NM	1.7 NM	1.6 NM	0.7 NM	1.2 NM	0.9 NM			
CATEGORY	A		B		C		D		
LNVA MDA	780-2½				767 (800-2½)				

NE-3, 11 JUN 2026 to 09 JUL 2026

NE-3, 11 JUN 2026 to 09 JUL 2026