

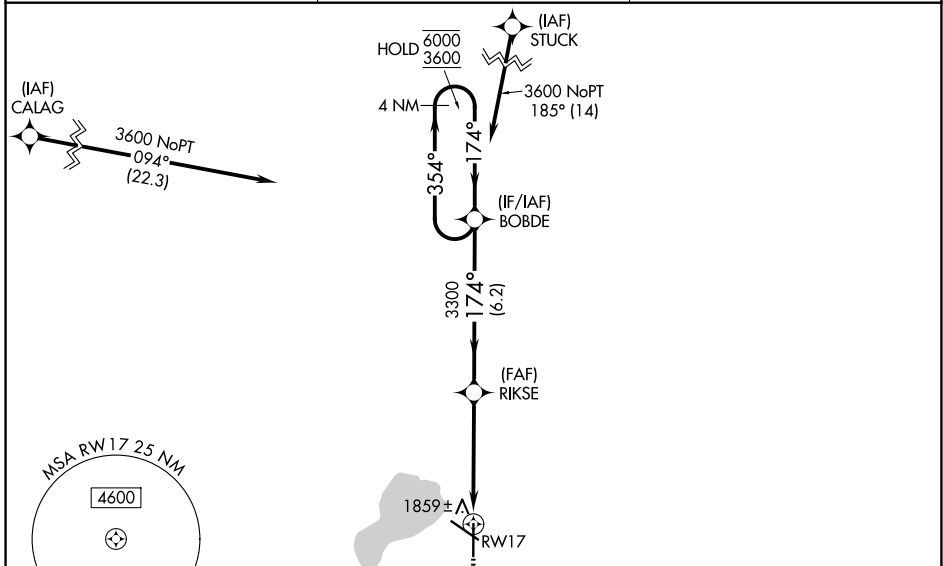
WAAS CH <b>82305</b> <b>W17A</b>	APP CRS <b>174°</b>	Rwy Ldg TDZE Apt Elev	<b>6893</b> <b>1741</b> <b>1749</b>
--	------------------------	-----------------------------	---

# RNAV (GPS) RWY 17

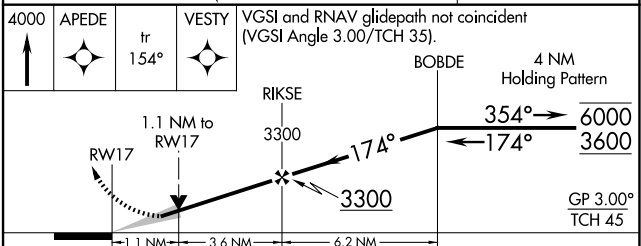
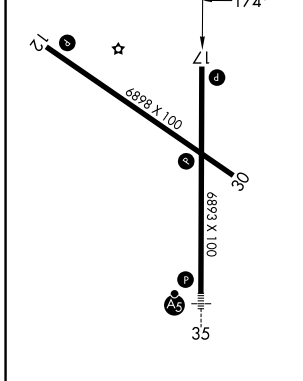
WATERTOWN RGNL (ATY)

RNP APCH - GPS.	MISSED APPROACH: Climb to 4000 direct APEDE and on track 154° to VESTY and hold.
<p>▼ For uncompensated Baro-VNAV systems, LNAV/VNAV NA below -18°C or above 54°C.</p>	

ASOS <b>126.625</b>	MINNEAPOLIS CENTER <b>128.5 306.2</b>	UNICOM <b>123.05 (CTAF) 0</b>
------------------------	--	----------------------------------



ELEV 1749	<b>D</b>	TDZE 1741
-----------	----------	-----------



CATEGORY	A	B	C	D
LPV DA		2055-7/8	314 (400-7/8)	
LNAV/VNAV DA		2130-1 1/8	389 (400-1 1/8)	
LNAV MDA		2120-1	379 (400-1)	
CIRCLING	2260-1	511 (600-1)	2500-2 1/4 751 (800-2 1/4)	2500-2 1/2 751 (800-2 1/2)

REIL Rwy 12, 17 and 30  
HIRL Rwy 17-35  
MIRL Rwy 12-30

NC-1, 11 JUN 2026 to 09 JUL 2026

NC-1, 11 JUN 2026 to 09 JUL 2026