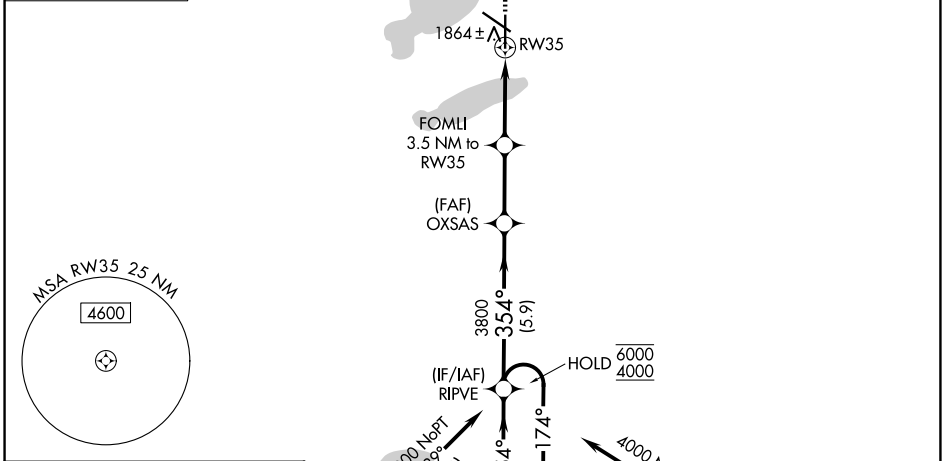
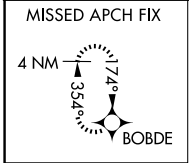


WAAS CH 82614 W35A	APP CRS 354°	Rwy Ldg TDZE Apt Elev	6893 1745 1749
--	------------------------	-----------------------------	---

RNAV (GPS) RWY 35

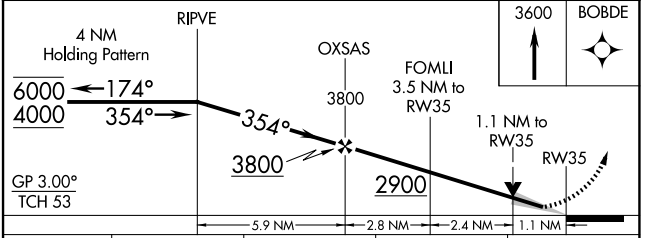
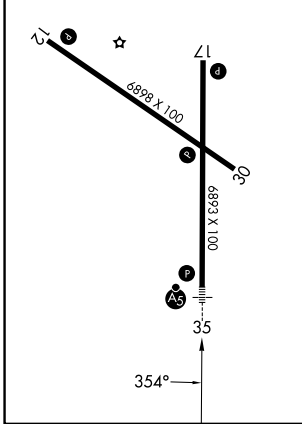
WATERTOWN RGNL (ATY)

RNP APCH - GPS.		MALSR	MISSED APPROACH: Climb to 3600 direct BOBDE and hold.
<p>▼ For uncompensated Baro-VNAV systems, LNAV/VNAV NA below -21°C or above 54°C. For inop ALS, increase LNAV Cat C/D visibility to 1½ SM.</p> <p>▲</p>			
ASOS 126.625	MINNEAPOLIS CENTER 128.5 306.2	UNICOM 123.05 (CTAF) 0	



ELEV 1749	D	TDZE 1745
-----------	----------	-----------

REIL Rwy 12, 17 and 30
 HIRL Rwy 17-35
 MIRL Rwy 12-30



CATEGORY	A	B	C	D
LPV DA	1945-½ 200 (200-½)			
LNAV/VNAV DA	2180-¾ 435 (500-¾)			
LNAV MDA	2160-½	415 (500-½)	2160-¾	415 (500-¾)
CIRCLING	2260-1	511 (600-1)	2500-2¼ 751 (800-2¼)	2500-2½ 751 (800-2½)

NC-1, 11 JUN 2026 to 09 JUL 2026

NC-1, 11 JUN 2026 to 09 JUL 2026