

VORTAC BAF <b>113.0</b> Chan <b>77</b>	APCH CRS <b>208°</b>	Rwy ldg TDZE <b>8919</b> Arpt Elev <b>270</b>
--	-------------------------	---

[USAF]

WESTFIELD-BARNES RGNL (KBAF)

DME required



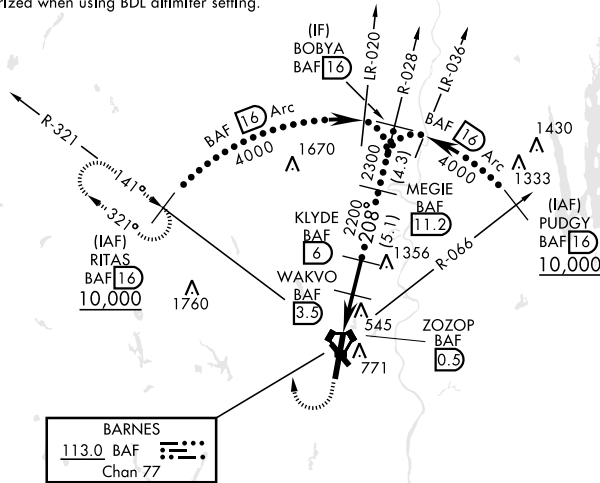
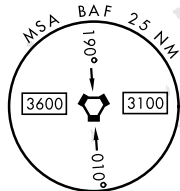
MISSED APPROACH: Climb to 1400, then climbing right turn to 4000 via hdg 010° and BAF VORTAC R-321 to RITAS/16.0 DME and hold.

- \* When ALS inop, increase CAT CDE vis to 1½ miles.
- \*\* When ALS inop, increase CAT CDE vis to 1% miles.

ATIS <b>127.1 263.15</b>	BRADLEY APP CON <b>125.35 281.5</b>	WESTFIELD TOWER ★ <b>125.075 (CTAF) 0 251.1</b>	GND CON <b>121.7 289.4</b>
-----------------------------	--	--	-------------------------------

When lcl altimeter setting not received, use Bradley Intl altimeter setting.  
Circling Rwy 15 not authorized at night.  
• 3491

When VGSI inop, circling to Rwy 15, 33 not authorized at night.  
VDP not authorized when using BDL altimeter setting.



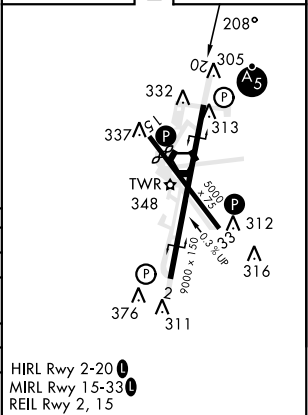
NE-1, 11 JUN 2026 to 09 JUL 2026

NE-1, 11 JUN 2026 to 09 JUL 2026

EMERG SAFE ALT 100 NM 6500

1400	4000	RITAS R-321 16	
↑	hdg 010°		
CATEGORY	C	D	E
S-20*	800/55	530	(600-1¼)
CIRCLING	1160-2¾ 890 (900-2¾)	1660-3	1390 (1400-3)
BRADLEY INTL ALTIMETER			
S-20**	860-1¼	590	(600-1¼)
CIRCLING	1200-2¾ 950 (1000-2¾)	1720-3	1450 (1500-3)

ELEV	270	TDZE	270
------	-----	------	-----



HIRL Rwy 2-20  
MIRL Rwy 15-33  
REIL Rwy 2, 15