


LOC I-BAF <b>111.9</b>	APP CRS <b>204°</b>	Rwy Ldg <b>8919</b>
		TDZE <b>270</b>
		Apt Elev <b>270</b>

# ILS or LOC RWY 20

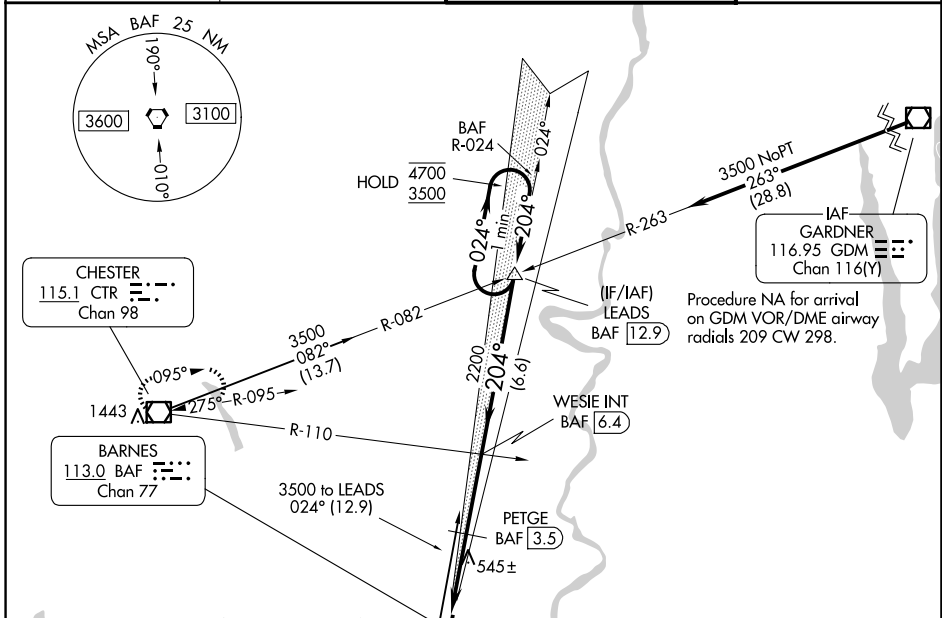
WESTFIELD-BARNES RGNL (BAF)

**⚠** Circling Rwy 15 NA at night. DME from BAF VORTAC. DME use requires simultaneous reception of I-BAF and BAF DME. For inop ALS, increase S-ILS 20 Cat E visibility to RVR 4000; increase S-LOC 20 Cat E visibility to 3 SM; increase PETGE fix minimums S-LOC 20 Cat E visibility to 1 1/2 SM.

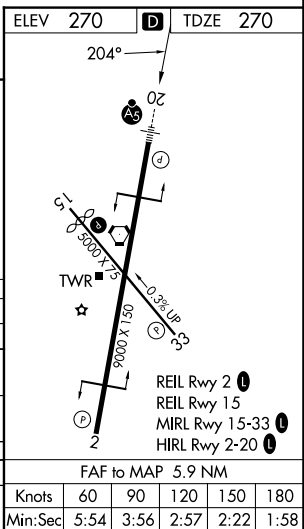
**⚠** -20°C

**MALSR**  MISSED APPROACH: Climb to 1300 then climbing right turn to 4000 direct CTR VOR/DME and hold, continue climb-in-hold to 4000.

ATIS <b>127.1 263.15</b>	BRADLEY APP CON <b>125.35 281.5</b>	WESTFIELD TOWER ★ <b>125.075 (CTAF) 0 251.1</b>	GND CON <b>121.7 289.4</b>
-----------------------------	--	--	-------------------------------



ELEV 270	TDZE 270
1300	4000
CTR	* LOC only.
WESIE INT BAF 6.4	LEADS BAF 12.9
PETGE BAF 3.5	One Minute Holding Pattern
2200	4700
204°	3500
2200	
*1260	GS 3.00°
	TCH 50
-1.5 NM	-1.5 NM
2.9 NM	6.6 NM
CATEGORY	A B C D E
S-ILS 20	520/24 250 (300-1/2)
S-LOC 20	1260/40 990 (1000-3/4) 1260/55 990 (1000-1) 1260-2 1/2 990 (1000-2 1/2)
CIRCLING	1260-1 1/4 990 (1000-1 1/4) 1260-1 1/2 990 (1000-1 1/2) 1260-3 990 (1000-3) 1660-3 1390 (1400-3)
PETGE FIX MINIMUMS (DME REQUIRED)	
S-LOC 20	800/24 530 (600-1/2) 800/55 530 (600-1)
CIRCLING	1160-1 1/4 890 (900-1 1/4) 1160-2 3/4 890 (900-2 3/4) 1660-3 1390 (1400-3)



NE-1, 11 JUN 2026 to 09 JUL 2026

NE-1, 11 JUN 2026 to 09 JUL 2026