

WAAS CH <b>86405</b>	APP CRS <b>204°</b>	Rwy Ldg TDZE Apt Elev	<b>8919</b> <b>270</b> <b>270</b>
<b>W20A</b>			

# RNAV (GPS) RWY 20

WESTFIELD-BARNES RGNL (B.A.F.)

**⚠** Baro-VNAV NA when using Bradley Intl altimeter setting. For uncompensated Baro-VNAV systems, LNAV/VNAV NA below -15°C (5°F) or above 54°C (130°F). DME/DME RNP-0.3 NA. When local altimeter setting not received, use Bradley Intl altimeter setting and increase LPV DA to 561; LNAV/VNAV DA to 996 and increase all Cats visibility to 2¼; all MDA 60 feet and LNAV Cats B, C, D and E visibility to 1¼. For inoperative MALSR, increase LPV Cat E visibility to RVR 4000, LNAV/VNAV all Cats visibility to 2½, LNAV Cat E visibility to 1½. Night landing: Rwy 15 NA.

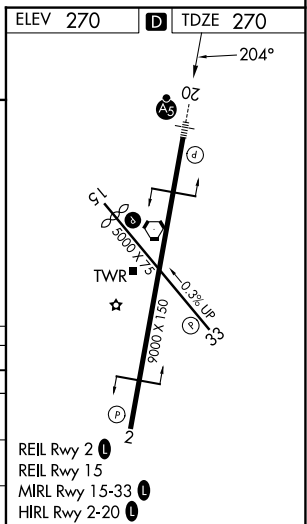
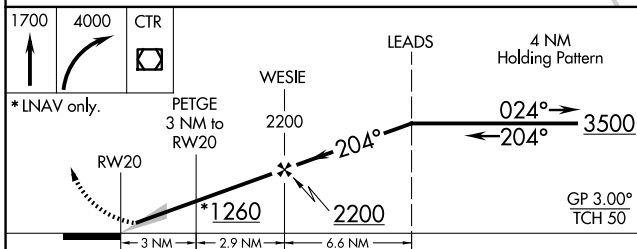
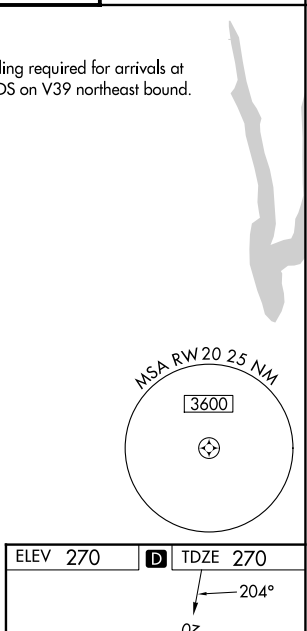
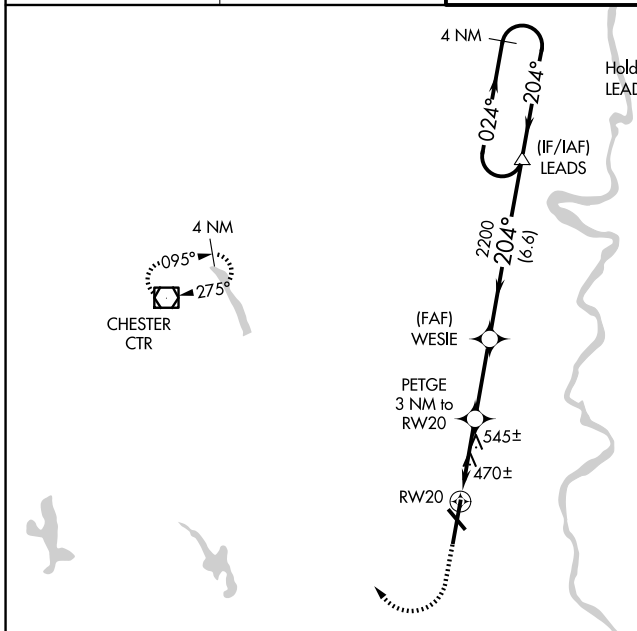
**MALSR**  
**A5**  
**MISSED APPROACH:**  
Climb to 1700 then climbing right turn to 4000 direct CTR VOR/DME and hold.

ATIS  
**127.1 263.15**

BRADLEY APP CON  
**125.35 281.5**

WESTFIELD TOWER ★  
**125.075 (CTAF) 0 251.1**

GND CON  
**121.7 289.4**



CATEGORY	A	B	C	D	E
LPV DA	520/24		250 (300-½)		
LNAV/VNAV DA	955-1⅞		685 (700-1⅞)		
LNAV MDA	800/24	530 (600-½)	800/55	530 (600-1)	
CIRCLING	1160-1¼	890 (900-1¼)	1160-2¾ 890 (900-2¾)	1660-3	1390 (1400-3)

NE-1, 11 JUN 2026 to 09 JUL 2026

NE-1, 11 JUN 2026 to 09 JUL 2026