

BAF VORTAC <b>113.0</b> Chan <b>77</b>	APP CRS <b>025°</b>	Rwy Ldg TDZE <b>264</b> Apt Elev <b>270</b>
--	------------------------	---

# VOR or TACAN RWY 2

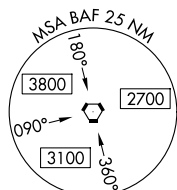
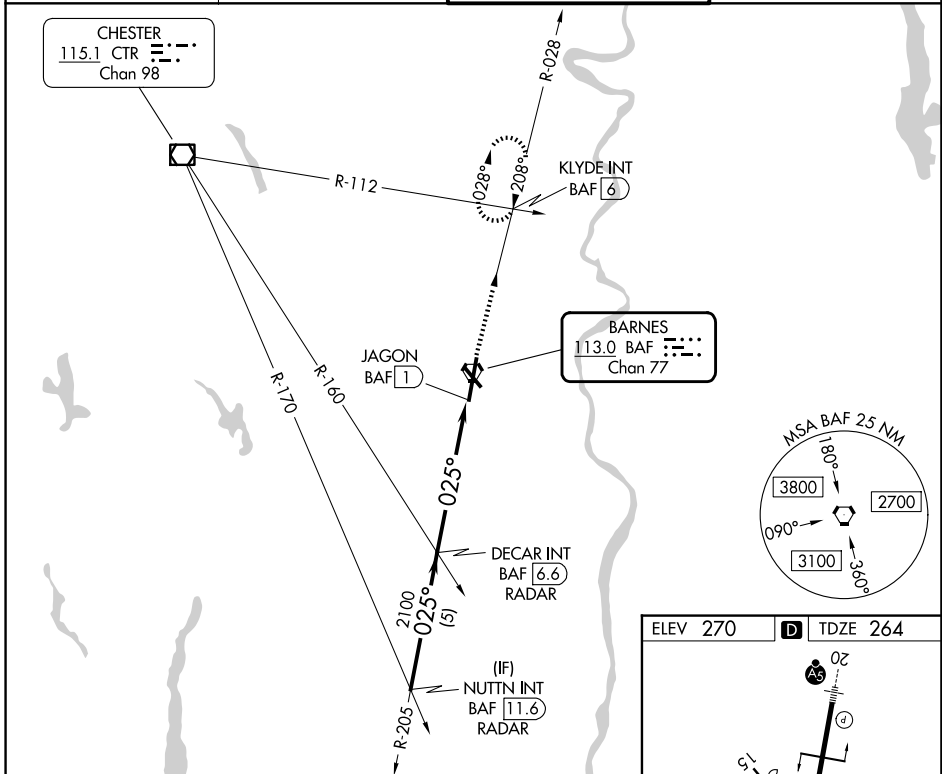
WESTFIELD-BARNES RGNL (BAF)

RADAR required for procedure entry.

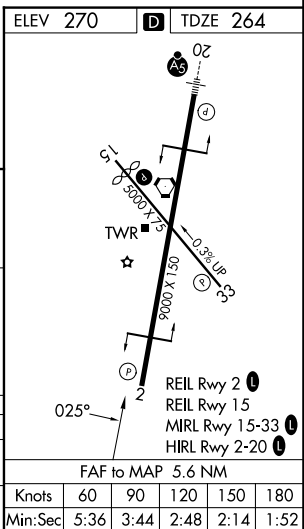
**⚠** Rwy 2 helicopter visibility reduction below 3/4 SM NA. When local altimeter setting not received, use BDL altimeter setting and increase all MDAs 60 feet and S-2 visibility Cat C/D/E 1/4 SM. VDP NA when using BDL altimeter setting.  
**❄** -20°C  
 Circling Rwy 15 NA at night.

**MISSED APPROACH:** Climb to 3000 on BAF VORTAC R-028 to KLYDE INT/BAF 6 DME and hold, continue climb-in-hold to 3000.

ATIS <b>127.1 263.15</b>	BRADLEY APP CON <b>125.35 281.5</b>	WESTFIELD TOWER ★ <b>125.075 (CTAF) 0 251.1</b>	GND CON <b>121.7 289.4</b>
-----------------------------	--	--	-------------------------------



NUTT INT BAF 11.6 RADAR	VGSI and descent angles not coincident (VGSI Angle 3.00/TCH 50).				3000 ↑ BAF R-028 KLYDE INT
	025° 2100 3.02° TCH 43 DECAR INT BAF 6.6 RADAR JAGON BAF 1 BAF 2.8 BAF VORTAC				
5 NM		3.8 NM		1.8 NM	
CATEGORY	A	B	C	D	E
S-2	900-1	636 (700-1)	900-1 3/4 636 (700-1 3/4)		
CIRCLING	1160-1 1/4	890 (900-1 1/4)	1160-2 3/4 890 (900-2 3/4)	1660-3	1390 (1400-3)



NE-1, 11 JUN 2026 to 09 JUL 2026

NE-1, 11 JUN 2026 to 09 JUL 2026