

# TACAN RWY 23

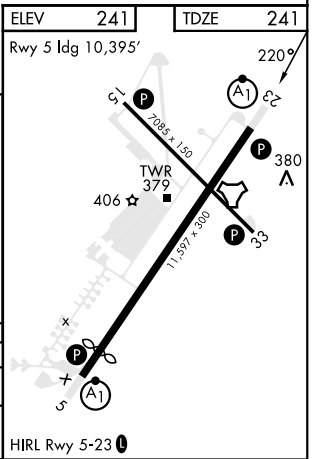
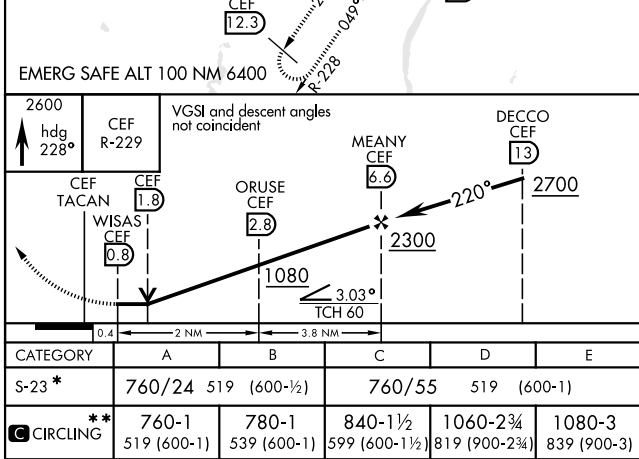
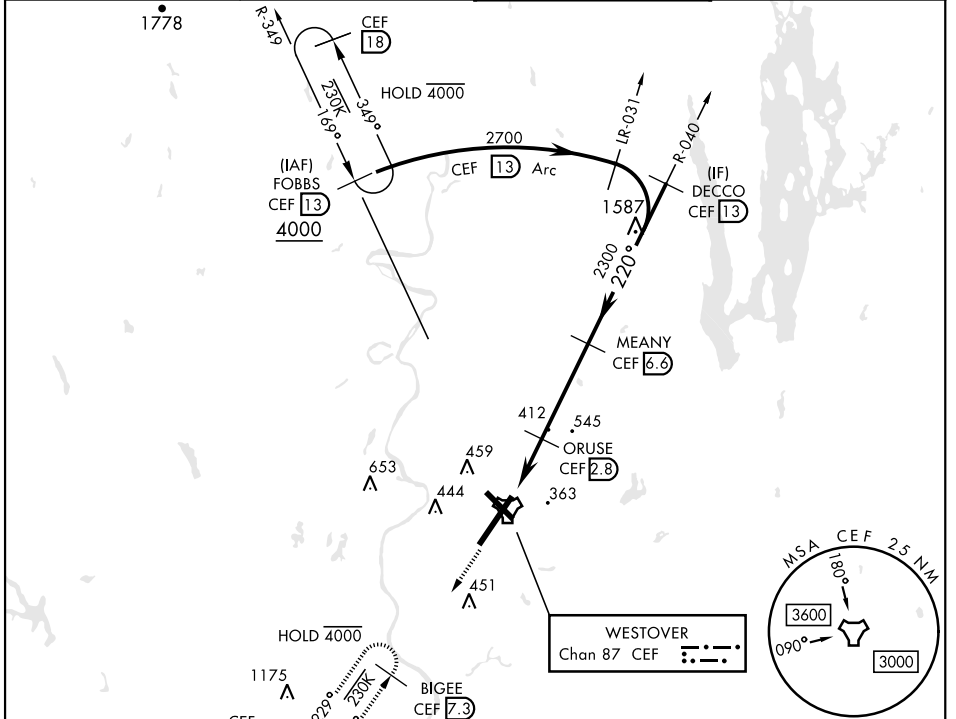
TACAN CEF Chan <b>87</b>	APCH CRS <b>220°</b>	Rwy Idg <b>11,597</b> TDZE <b>241</b> Arprt Elev <b>241</b>	[USAF]	WESTOVER ARB METROPOLITAN (KCEF)
-----------------------------	-------------------------	---	--------	----------------------------------

▽ \* When ALS inop, increase CAT AB RVR to 55 and vis to 1 mile, CAT CDE vis to 1/2 miles.  
\*\* Circling not authorized all CAT acft from RWY 23 clockwise to RWY 33.



MISSED APPROACH: Climb to 2600 on heading 228° to intercept CEF TACAN R-229 direct BIGEE and hold.

ATIS ★ <b>127.525</b>	BRADLEY APP CON <b>125.35 281.5</b>	TOWER ★ <b>134.85 (CTAF) 348.75</b>	GND CON <b>118.35 275.8</b>
--------------------------	--	--	--------------------------------



# TACAN RWY 23

NE-1, 11 JUN 2026 to 09 JUL 2026

NE-1, 11 JUN 2026 to 09 JUL 2026