

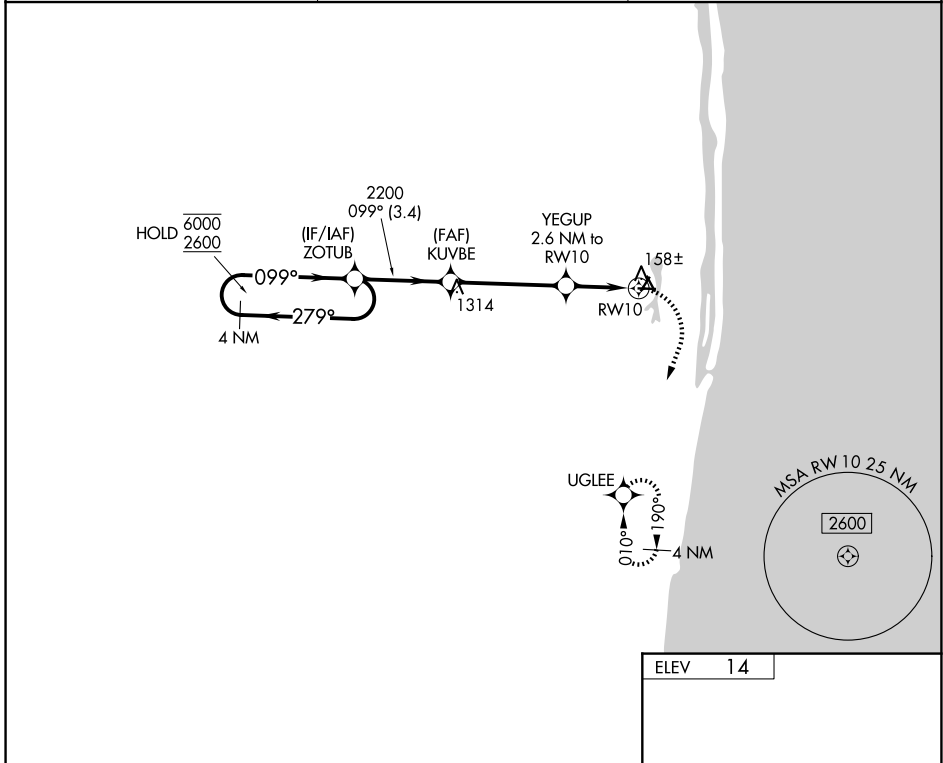
APP CRS	Rwy Ldg	N/A
099°	TDZE	N/A
	Apt Elev	14

# RNAV (GPS)-A

## PALM BEACH COUNTY PARK (LNA)

RNP APCH - GPS.	MISSED APPROACH: (Do not exceed 210K until turn completion) Climbing right turn to 2000 direct UGLEE and hold; continue climb-in-hold to 2000.
Rwy 10 helicopter visibility reduction below 1 SM NA. Circling Rwy 4, 16, 22, 28, 34 NA at night.	

AWOS-3PT <b>119.925</b>	PALM BEACH APP CON <b>127.35 343.6</b>	UNICOM <b>122.7 (CTAF) 0</b>
----------------------------	---	---------------------------------



VGSi and descent angles not coincident (VGSi Angle 4.00/TCH 46).		2000	UGLEE	
<p>4 NM Holding Pattern</p> <p>6000 ← 279° / 099° → 2600</p> <p>ZOTUB</p> <p>KUVBE</p> <p>YEGUP 2.6 NM to RW10</p> <p>3.00° TCH 46</p> <p>2200</p> <p>880</p> <p>RW10</p> <p>3.4 NM   4.1 NM   2.6 NM</p>				
CATEGORY	A	B	C	D
CIRCLING	480-1 466 (500-1)	540-1 526 (600-1)	580-1½ 566 (600-1½)	NA

MIRL Rwy 4-22, 10-28 and 16-34 0

SE-3, 11 JUN 2026 to 09 JUL 2026

SE-3, 11 JUN 2026 to 09 JUL 2026