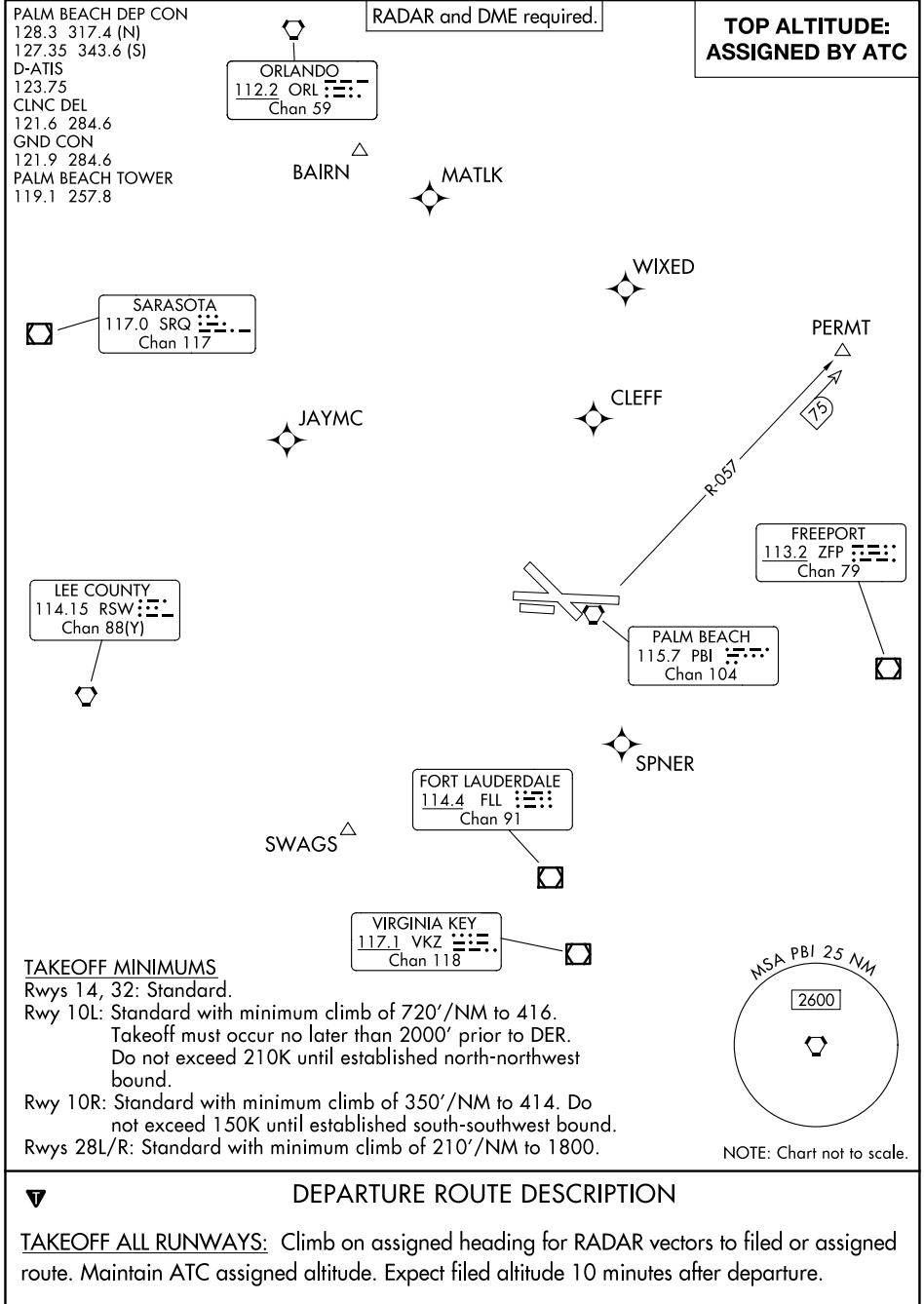


# PALM BEACH FOUR DEPARTURE



PALM BEACH DEP CON  
128.3 317.4 (N)  
127.35 343.6 (S)  
D-ATIS  
123.75  
CLNC DEL  
121.6 284.6  
GND CON  
121.9 284.6  
PALM BEACH TOWER  
119.1 257.8

RADAR and DME required.

**TOP ALTITUDE:  
ASSIGNED BY ATC**

ORLANDO  
112.2 ORL  
Chan 59

SARASOTA  
117.0 SRQ  
Chan 117

LEE COUNTY  
114.15 RSW  
Chan 88(Y)

FORT LAUDERDALE  
114.4 FL  
Chan 91

VIRGINIA KEY  
117.1 VKZ  
Chan 118

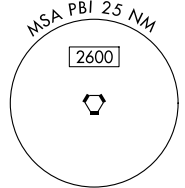
### TAKEOFF MINIMUMS

Rwys 14, 32: Standard.

Rwy 10L: Standard with minimum climb of 720'/NM to 416.  
Takeoff must occur no later than 2000' prior to DER.  
Do not exceed 210K until established north-northwest bound.

Rwy 10R: Standard with minimum climb of 350'/NM to 414. Do not exceed 150K until established south-southwest bound.

Rwys 28L/R: Standard with minimum climb of 210'/NM to 1800.



NOTE: Chart not to scale.



### DEPARTURE ROUTE DESCRIPTION

**TAKEOFF ALL RUNWAYS:** Climb on assigned heading for RADAR vectors to filed or assigned route. Maintain ATC assigned altitude. Expect filed altitude 10 minutes after departure.

# PALM BEACH FOUR DEPARTURE