

WAAS CH <b>45518</b> <b>W28A</b>	APP CRS <b>279°</b>	Rwy Ldg TDZE <b>18</b> Apt Elev <b>20</b>	<b>8240</b>
--	------------------------	---	-------------

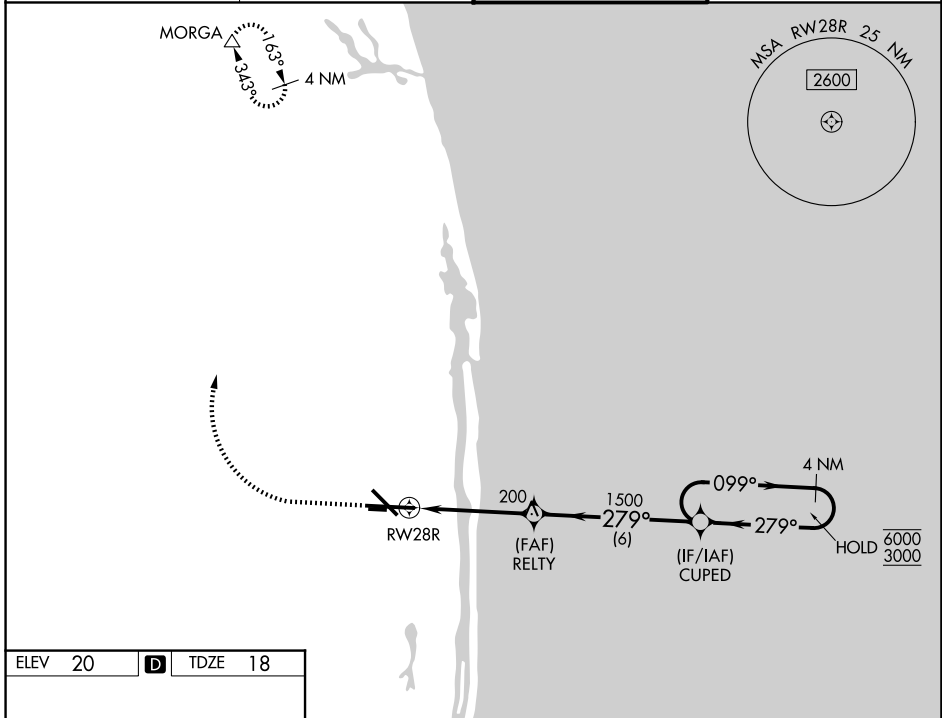
# RNAV (GPS) Y RWY 28R

PALM BEACH INTL (PBI)

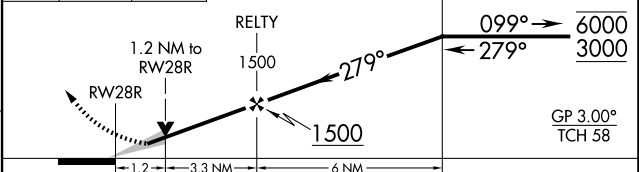
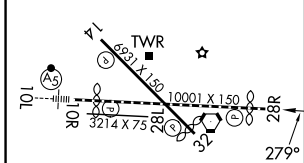
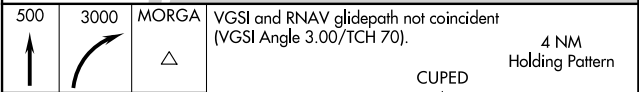
RNP APCH - GPS.  
 ⚠ For uncompensated Baro-VNAV systems, procedure NA below 6°C or above 54°C.

MISSED APPROACH: Climb to 500 then climbing right turn to 3000 direct MORGA and hold.

D-ATIS <b>123.75</b>	PALM BEACH APP CON <b>128.3 317.4</b>	PALM BEACH TOWER <b>119.1 257.8</b>	GND CON <b>121.9 284.6</b>
-------------------------	--	--	-------------------------------



ELEV 20	<b>D</b>	TDZE 18
---------	----------	---------



CATEGORY	A	B	C	D
LPV DA		218/40	200 (200-¾)	
LNAV/VNAV DA		342/50	324 (400-1)	
LNAV MDA	460/55	442 (500-1)	460-1⅓	442 (500-1⅓)
CIRCLING	560-1	540 (600-1)	740-2 720 (800-2)	780-2½ 760 (800-2½)

HIRL Rwy 10L-28R  
 REIL Rwys 10R, 14, 28L, 28R and 32  
 MIRL Rwys 14-32 and 10R-28L

SE-3, 11 JUN 2026 to 09 JUL 2026

SE-3, 11 JUN 2026 to 09 JUL 2026