

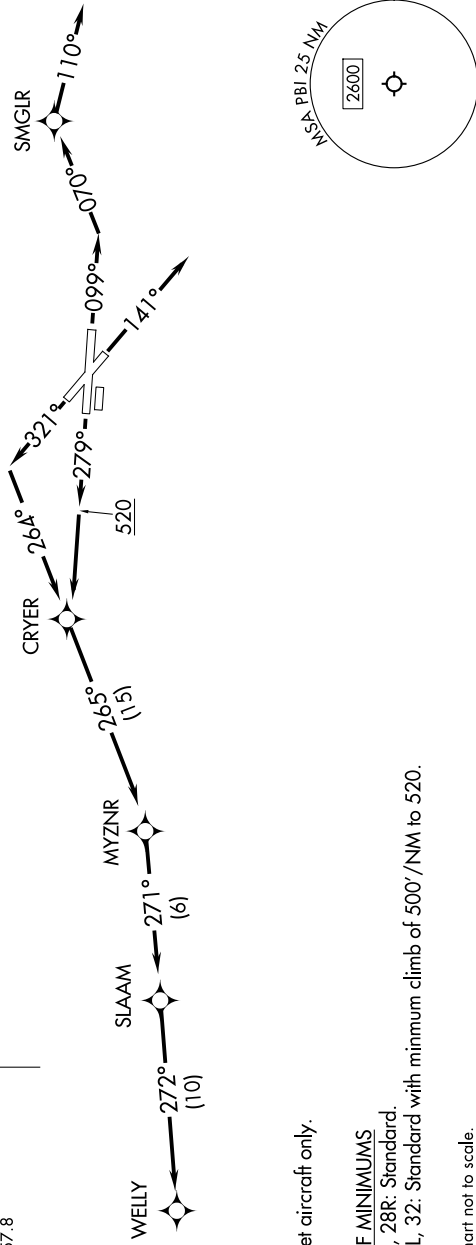
WELLY FOUR DEPARTURE (RNAV)

96202 UN 60 11 3: 11 UN 2026 to 09 JUL 2026

TOP ALTITUDE:
RWY 10L, 28R: 4000
RWY 14, 32: 1500

RNAV 1-DME/DME/IRU or GPS.
RADAR required.

- PALM BEACH DEP CON 127.35 343.6
- D-ATIS 123.75
- CLNC DEL 121.6 284.6
- CPDLC 121.6 284.6
- GND CON 121.9 284.6
- PALM BEACH TOWER 119.1 257.8



NOTE: Jet aircraft only.

TAKEOFF MINIMUMS

- Rwys 14, 28R: Standard.
- Rwys 10L, 32: Standard with minimum climb of 500' /NM to 520.

NOTE: Chart not to scale.

DEPARTURE ROUTE DESCRIPTION

TAKEOFF RUNWAY 10L: Climb on heading 099° to intercept course 070° to SMGLR, then on track 110° for vectors to SLAAM, thence

TAKEOFF RUNWAY 14: Climb on heading 141° for vectors to SLAAM, thence

TAKEOFF RUNWAY 28R: Climb on heading 279° to 520, then direct CRYER, then on depicted route to SLAAM, thence

TAKEOFF RUNWAY 32: Climb on heading 321° to intercept course 264° to CRYER, then on depicted route to SLAAM, thence

. . . . on track 272° to WELLY. Rwy 10L, 28R maintain 4000. Rwy 14, 32 maintain 1500. Expect filed altitude 10 minutes after departure.

WELLY FOUR DEPARTURE (RNAV)

SE-3, 11 JUN 2026 to 09 JUL 2026