

LOC I-SWF <b>110.1</b>	APP CRS <b>092°</b>	Rwy Ldg TDZE Apt Elev	<b>8817</b> <b>482</b> <b>491</b>
---------------------------	------------------------	-----------------------------	---

# ILS RWY 9 (CAT II & III)

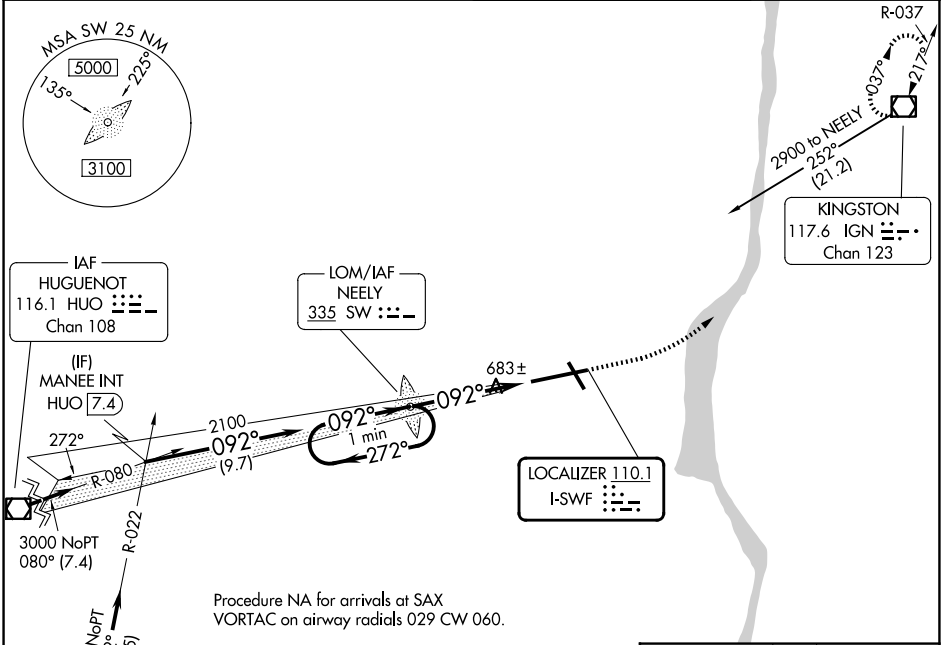
## NEW YORK STEWART INTL (SWF)

**⚠** CAT II: RVR 1000 authorized with specific OPSPEC, MSPEC, or LOA and use of autoland or HUD to touchdown.

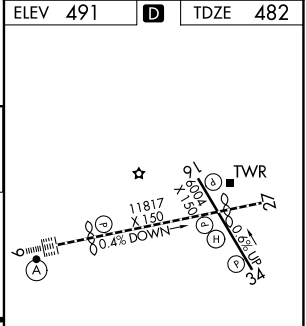
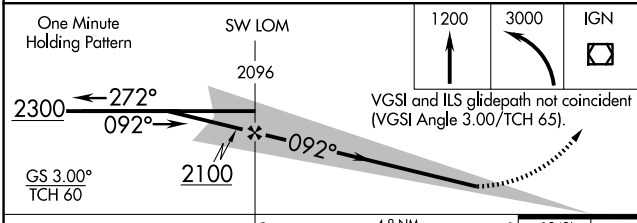
**ALSF-2**

**MISSED APPROACH:** Climb to 1200 then climbing left turn to 3000 direct IGN VOR/DME and hold.

ATIS <b>124.575</b>	NEW YORK APP CON <b>132.75 363.1</b>	STEWART TOWER <b>121.0 254.4</b>	GND CON <b>121.9</b>
------------------------	---	-------------------------------------	-------------------------



ELEV 491	<b>D</b>	TDZE 482
----------	----------	----------



CATEGORY	A	B	C	D
S-ILS 9		CAT II RA 97/12	100	DA 582
S-ILS 9		CAT IIIa RVR 07		
S-ILS 9		CAT IIIb RVR 06		
S-ILS 9		CAT IIIc NA		

**CATEGORY II & III ILS SPECIAL AIRCREW & AIRCRAFT CERTIFICATION REQUIRED**

TDZ/CL Rwy 9  
HIRL Rwys 9-27 and 16-34  
REIL Rwys 16, 27 and 34

NE-2, 11 JUN 2026 to 09 JUL 2026

NE-2, 11 JUN 2026 to 09 JUL 2026