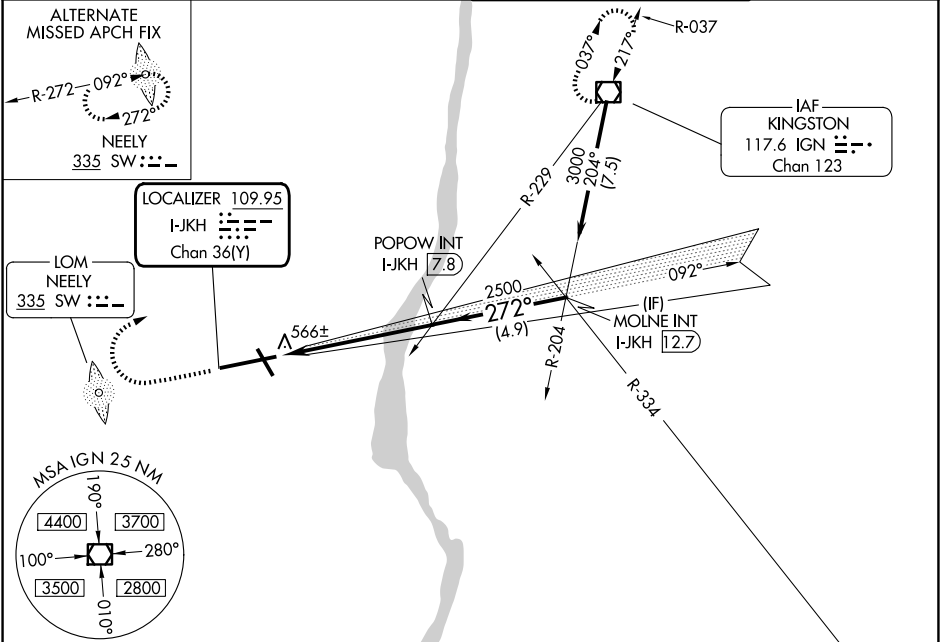


LOC/DME I-JKH <b>109.95</b> Chan 36(Y)	APP CRS <b>272°</b>	Rwy Ldg <b>9817</b> TDZE <b>469</b> Apt Elev <b>491</b>
--	------------------------	---

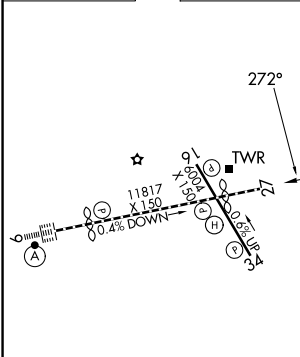
# ILS or LOC RWY 27

NEW YORK STEWART INTL (SWF)

<p><b>▽</b> <b>▲</b></p>		<p>MISSED APPROACH: Climb to 1600 then climbing right turn to 3000 direct IGN VOR/DME and hold.</p>	
<p>ATIS <b>124.575</b></p>	<p>NEW YORK APP CON <b>132.75 363.1</b></p>	<p>STEWART TOWER <b>121.0 254.4</b></p>	<p>GND CON <b>121.9</b></p>



ELEV 491	<b>D</b>	TDZE 469
----------	----------	----------



<p>TDZ/CL Rwy 9 HIRL Rwys 9-27 and 16-34 REIL Rwys 16, 27 and 34</p>					
<p>FAF to MAP 6.1 NM</p>					
Knots	60	90	120	150	180
Min:Sec	6:06	4:04	3:03	2:26	2:02

<p>1600</p>	<p>3000</p>	<p>IGN</p>	<p>POPOW INT I-JKH 7.8</p>	<p>MOLNE INT I-JKH 12.7</p>
<p>* LOC only.</p>				
<p>I-JKH 1.7</p>	<p>* I-JKH 2.8</p>	<p>2500</p>	<p>272°</p>	<p>3000</p>
<p>Procedure Turn NA</p>				
<p>GS 3.00° TCH 55</p>				
<p>1 NM      5.1 NM      4.9 NM</p>				
CATEGORY	A	B	C	D
S-ILS 27	719-1 250 (300-1)			
S-LOC 27	840-1 371 (400-1)			840-1¼ 371 (400-1¼)
CIRCLING	1200-1 709 (800-1)		1200-2 709 (800-2)	1200-2¼ 709 (800-2¼)

NE-2, 11 JUN 2026 to 09 JUL 2026

NE-2, 11 JUN 2026 to 09 JUL 2026