

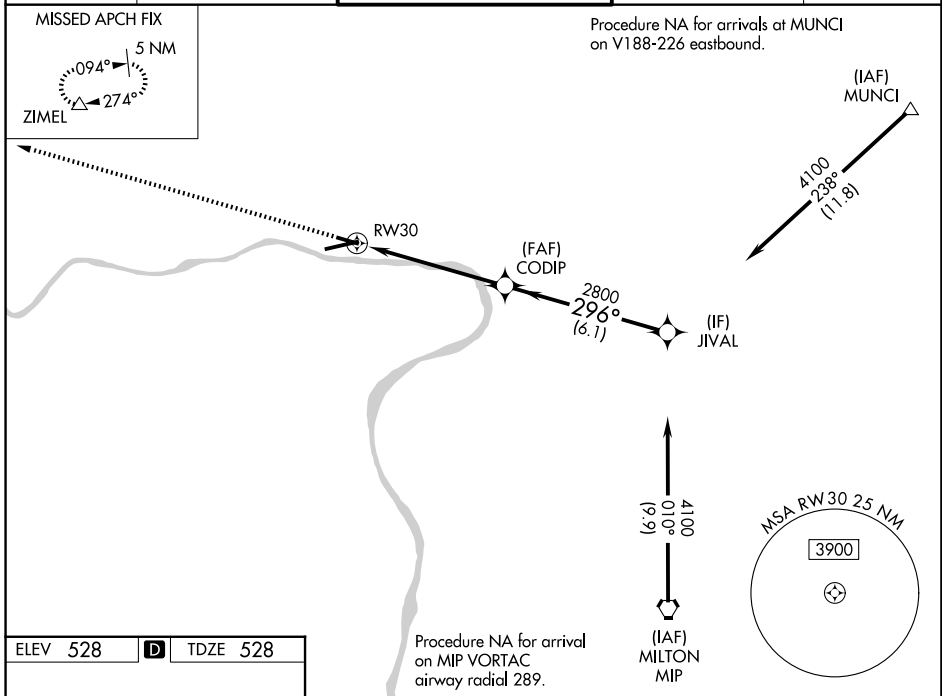
WAAS CH <b>93724</b> <b>W30A</b>	APP CRS <b>296°</b>	Rwy Ldg TDZE <b>528</b> Apt Elev <b>528</b>	<b>4273</b>
--	------------------------	---	-------------

# RNAV (GPS) RWY 30

WILLIAMSPORT RGNL (IPT)

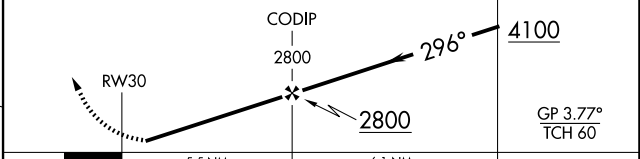
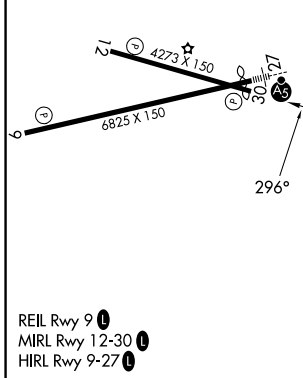
<b>▽</b>	DME/DME RNP-0.3 NA. Helicopter visibility reduction below 1 SM NA. Circling NA south of Rwy 9 and southwest of Rwy 30.	MISSED APPROACH: Climb to 4500 direct ZIMEL and hold, continue climb-in-hold to 4500.
<b>⚠</b>		
<b>❄</b> -13°C	Night landing: Rwy 12, 30 NA.	

ASOS <b>125.225</b>	NEW YORK CENTER <b>124.9</b>	WILLIAMSPORT TOWER ★ <b>119.1 (CTAF) 257.8</b>	GND CON <b>121.9</b>	UNICOM <b>122.95</b>
------------------------	---------------------------------	---	-------------------------	-------------------------



ELEV 528	<b>D</b>	TDZE 528
----------	----------	----------

4500	ZIMEL △	VGSI and RNAV glidepath not coincident (VGSI Angle 4.00/TCH 41).
------	------------	--



CATEGORY	A	B	C	D
LPV DA	843-1	315 (400-1)		NA
LNAV/VNAV DA	2212-5	1684 (1700-5)		NA
LNAV MDA	2020-1¼ 1492 (1500-1¼)	2020-1½ 1492 (1500-1½)		NA
CIRCLING	2020-1¼ 1492 (1500-1¼)	2020-1½ 1492 (1500-1½)		NA