

WAAS CH 86924 W09A	APP CRS 087°	Rwy Ldg 6073 TDZE 521 Apt Elev 528
--	------------------------	---

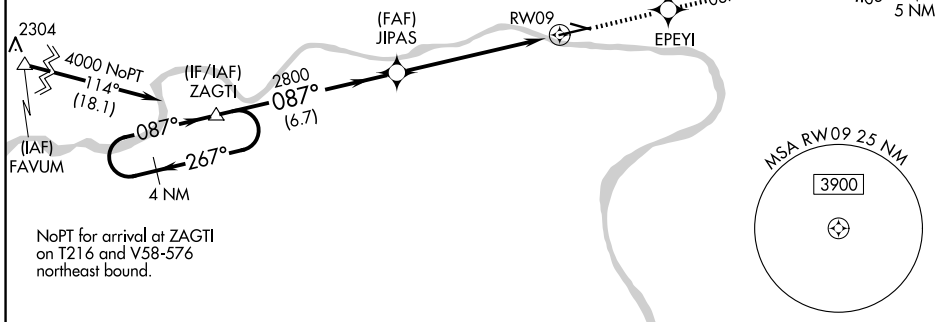
RNAV (GPS) RWY 9

WILLIAMSPORT RGNL (IPT)

 -13°C	DME/DME RNP-0.3 NA. Circling Rwy 12, 30 NA at night. Circling NA south of Rwy 9 and southwest of Rwy 30. Rwy 9 helicopter visibility reduction below ¾ SM NA.	MISSED APPROACH: Climb to 4300 direct EPEYI and on track 087° to ZUMEV and hold, continue climb-in-hold to 4300.
---------------	--	--

ASOS 125.225	NEW YORK CENTER 124.9	WILLIAMSPORT TOWER ★ 119.1 (CTAF) 257.8	GND CON 121.9	UNICOM 122.95
------------------------	---------------------------------	--	-------------------------	-------------------------

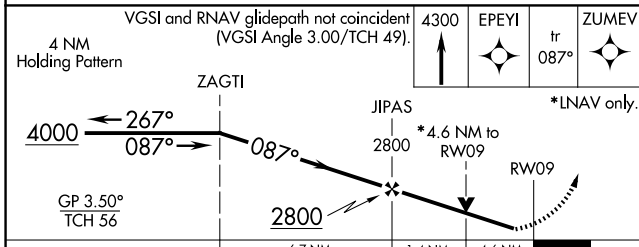
Procedure NA for arrivals at FAVUM on V226 westbound and V170 northwest bound.



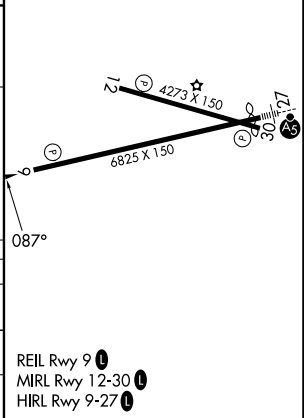
NE-4, 11 JUN 2026 to 09 JUL 2026

NE-4, 11 JUN 2026 to 09 JUL 2026

ELEV 528	TDZE 521
----------	----------



CATEGORY	A	B	C	D
LPV DA	1036-1½ 515 (600-1½)			NA
RNAV MDA	2040-1¼ 1519 (1600-1¼)	2040-1½ 1519 (1600-1½)	2040-3 1519 (1600-3)	NA
CIRCLING	2040-1¼ 1512 (1600-1¼)	2040-1½ 1512 (1600-1½)	2040-3 1512 (1600-3)	NA



REIL Rwy 9
MIRL Rwy 12-30
HIRL Rwy 9-27