

WINK, TEXAS

AL-461 (FAA)

24361

WAAS CH <b>56233</b> <b>W31A</b>	APP CRS <b>313°</b>	Rwy Idg TDZE Apt Elev	<b>5003</b> <b>2818</b> <b>2822</b>
--	------------------------	-----------------------------	---

# RNAV (GPS) RWY 31

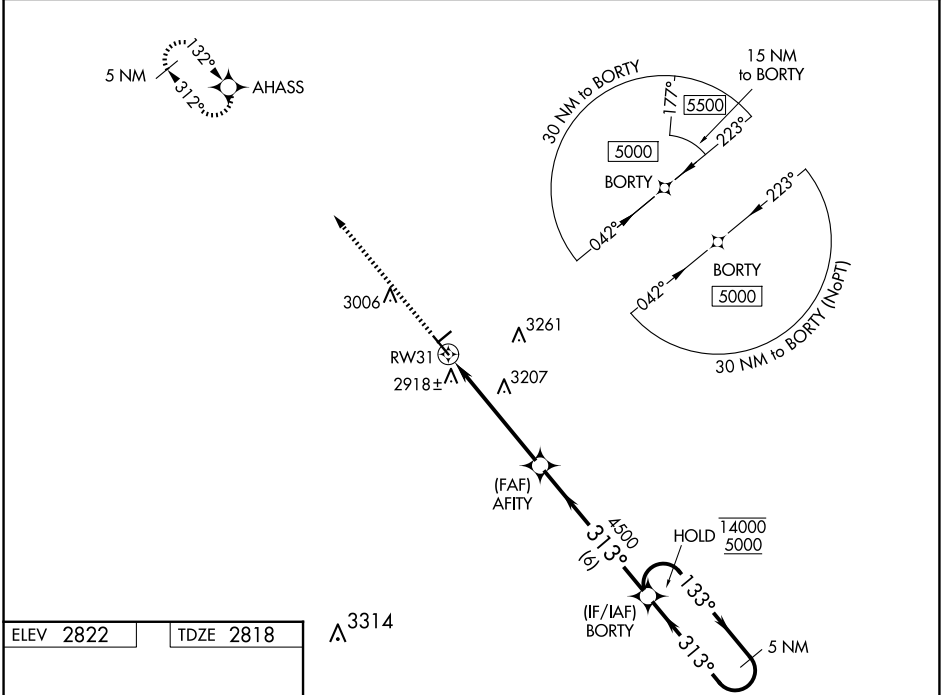
WINKLER COUNTY (INK)

RNP APCH - GPS.

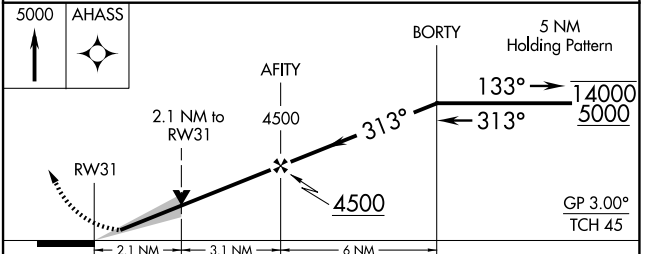
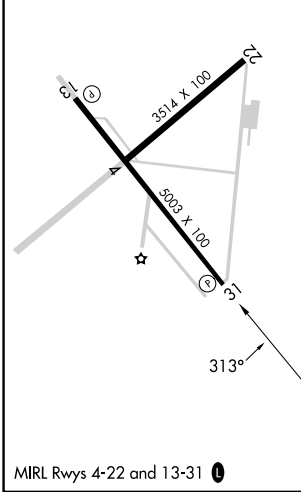
**▽**  
**▲** For uncompensated Baro-VNAV systems, LNAV/VNAV NA below -20°C or above 54°C.

MISSED APPROACH: Climb to 5000 direct AHASS and hold.

ASOS <b>118.325</b>	FORT WORTH CENTER <b>133.1 298.95</b>	UNICOM <b>123.0 (CTAF) 0</b>
------------------------	--	---------------------------------



ELEV 2822	TDZE 2818
-----------	-----------



CATEGORY	A	B	C	D
LPV DA	3068- <sup>3</sup> / <sub>4</sub>	250 (300- <sup>3</sup> / <sub>4</sub> )		NA
LNAV/VNAV DA	3253-1 <sup>1</sup> / <sub>4</sub>	435 (500-1 <sup>1</sup> / <sub>4</sub> )		NA
LNAV MDA	3520-1	702 (700-1)	3520-2 702 (700-2)	NA
<b>C</b> CIRCLING	3520-1	698 (700-1)	3580-2 <sup>1</sup> / <sub>4</sub> 758 (800-2 <sup>1</sup> / <sub>4</sub> )	NA

WINK, TEXAS  
Amdt 1B 14JUL22

31°47'N-103°12'W

# RNAV (GPS) RWY 31

SC-3, 11 JUN 2026 to 09 JUL 2026

SC-3, 11 JUN 2026 to 09 JUL 2026