

NACHES FOUR DEPARTURE  
10 NOV 16

23334  
NACHES FOUR DEPARTURE

AL-465 (FAA)

YAKIMA AIR TRML/MCALISTER FLD (YKM)  
YAKIMA, WASHINGTON

SPOKANE DEP CON\*  
123.8 263.15  
ATIS  
125.25  
CLNC DEL  
121.9  
GND CON  
121.9  
YAKIMA TOWER\*  
133.25 257.8

**TOP ALTITUDE:  
10000**

SEATTLE  
116.8 SEA  
Chan 115

WENATCHEE  
114.35 EAT  
Chan 90(Y)

EPHRATA  
112.6 EPH  
Chan 73

MOSES LAKE  
115.0 MWH  
Chan 97

SPOKANE  
115.5 GEG  
Chan 102

ELLENSBURG  
117.9 ELN  
Chan 126

WALLA WALLA  
116.4 ALW  
Chan 111

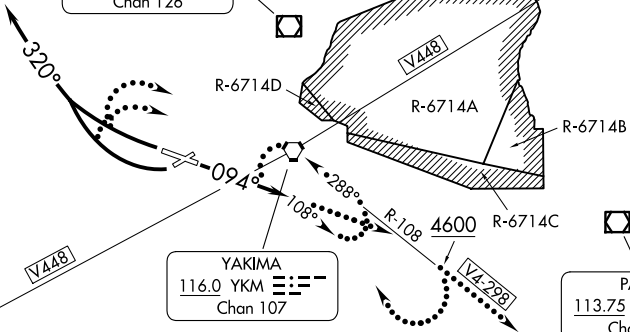
BATTLE GROUND  
116.6 BTG  
Chan 113

YAKIMA  
116.0 YKM  
Chan 107

PASCO  
113.75 PSC  
Chan 84(Y)

KLUCKITAT  
112.3 LTJ  
Chan 70

PENDLETON  
114.7 PDT  
Chan 94



TAKEOFF MINIMUMS

- Rwy 4: NA-obstacles.
- Rwy 9: Standard with minimum climb of 360' per NM to 4400.
- Rwy 22: Standard with minimum climb of 495' per NM to 6000.
- Rwy 27: Standard with minimum climb of 495' per NM to 6000.

NOTE: RADAR required.

(CONTINUED ON FOLLOWING PAGE)

NOTE: Chart not to scale.

YAKIMA, WASHINGTON  
YAKIMA AIR TRML/MCALISTER FLD (YKM)



DEPARTURE ROUTE DESCRIPTION

TAKEOFF RUNWAY 9: Climb heading 094° for vector to assigned route/fix. Thence . . . .  
TAKEOFF RUNWAYS 22, 27: Climbing right turn heading 320° for vector to assigned route/fix. Thence . . . .

. . . . maintain 10000 or assigned lower altitude. Expect clearance to filed altitude 5 minutes after departure.

LOST COMMUNICATIONS

If no transmissions are received for one minute after departure:

RUNWAY 9: Climb heading 094° and outbound YKM VORTAC R-108.

RUNWAYS 22, 27: Climbing right turn direct YKM VORTAC and outbound YKM R-108, eastbound aircraft V4-V298 continue on course, all other departures continue climb on YKM R-108, until 4600, then climbing right turn direct YKM VORTAC and hold to cross YKM VORTAC at or above MEA or MCA for route of flight.

NW-1, 11 JUN 2026 to 09 JUL 2026

NW-1, 11 JUN 2026 to 09 JUL 2026