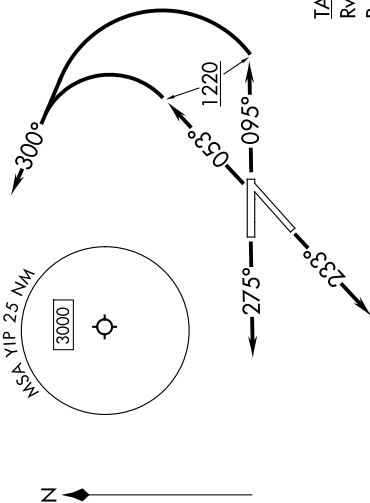


9200 UNR 60 to 2026 UNR 11 1-C-E

**TOP ALTITUDE:
ASSIGNED BY ATC**

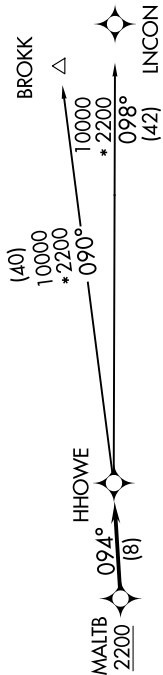


RNAV-1 DME/DME/IRU or GPS.
RADAR required.

NOTE: Turbojet departures at/above 10000, maintain 280K until advised by ATC.

NOTE: BROKK TRANSITION: For use by flights filed at or below FL270, or as assigned by ATC.

DETROIT DEP CON 118.95 284.0
ATIS 127.425
GND CON 119.975
WILLOW RUN TOWER 125.275 256.9



TAKEOFF MINIMUMS:

Rwys 5, 9: Standard with minimum climb of 500' per NM to 1220.

Rwy 23: Standard.

Rwy 27: Standard with minimum climb of 209' per NM to 1000.

NOTE: Chart not to scale.

DEPARTURE ROUTE DESCRIPTION

TAKEOFF RUNWAY 5: Climb on heading 053° to 1220, then on heading 300° or as assigned by ATC, for RADAR vectors to cross MALT B at or above 2200, thence....

TAKEOFF RUNWAY 9: Climb on heading 095° to 1220, then on heading 300° or as assigned by ATC, for RADAR vectors to cross MALT B at or above 2200, thence....

TAKEOFF RUNWAY 23: Climb on heading 233° or as assigned by ATC, for RADAR vectors to cross MALT B at or above 2200, thence....

TAKEOFF RUNWAY 27: Climb on heading 275° or as assigned by ATC, for RADAR vectors to cross MALT B at or above 2200, thence....

....on track 094° to HHOWE, then on (transition). Maintain ATC assigned altitude, expect filed altitude 10 minutes after departure.

**BROKK TRANSITION (HHOWE4.BROKK):
INCON TRANSITION (HHOWE4.INCON):**