

LIDDS FOUR DEPARTURE (RNAV)

AL-467 (FAA)

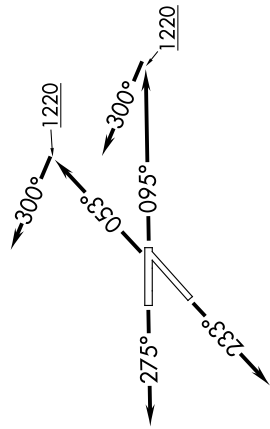
WILLOW RUN (YIP)

DETROIT, MICHIGAN

EC-1, 11 JUN 2026 to 09 JUL 2026

**TOP ALTITUDE:
ASSIGNED BY ATC**

RNAV 1 - DME/DME/IRU or GPS.
RADAR required.
RADAR required for non-GPS equipped aircraft.



TAKEOFF MINIMUMS:

Rwy 23: Standard.

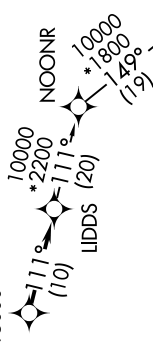
Rwys 5, 9: Standard with minimum climb of 500' per NM to 1220.

Rwy 27: Standard with minimum climb of 209' per NM to 1000.

DETROIT DEP CON
118.95 284.0
ATIS
127.425
GND CON
119.975
WILLOW RUN TOWER
125.275 256.9



KZLOV
15000



NOTE: Turbojet departures at/above 10000, maintain 280K until advised by ATC.

DEPARTURE ROUTE DESCRIPTION

TAKEOFF RUNWAY 5: Climb on heading 053° to 1220, then on heading 300° or as assigned by ATC, for RADAR vectors to cross KZLOV at or below 15000, thence....

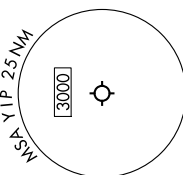
TAKEOFF RUNWAY 9: Climb on heading 095° to 1220, then on heading 300° or as assigned by ATC, for RADAR vectors to cross KZLOV at or below 15000, thence....

TAKEOFF RUNWAY 23: Climb on heading 233° or as assigned by ATC, for RADAR vectors to cross KZLOV at or below 15000, thence....

TAKEOFF RUNWAY 27: Climb on heading 275° or as assigned by ATC, for RADAR vectors to cross KZLOV at or below 15000, thence....

...on track 111° to LIDDS, then on (transition). Maintain ATC assigned altitude, expect filed altitude 10 minutes after departure.

GRIVY TRANSITION (LIDDS4.GRIVY):



NOTE: Chart not to scale.

LIDDS FOUR DEPARTURE (RNAV)

DETROIT, MICHIGAN

WILLOW RUN (YIP)

EC-1, 11 JUN 2026 to 09 JUL 2026