

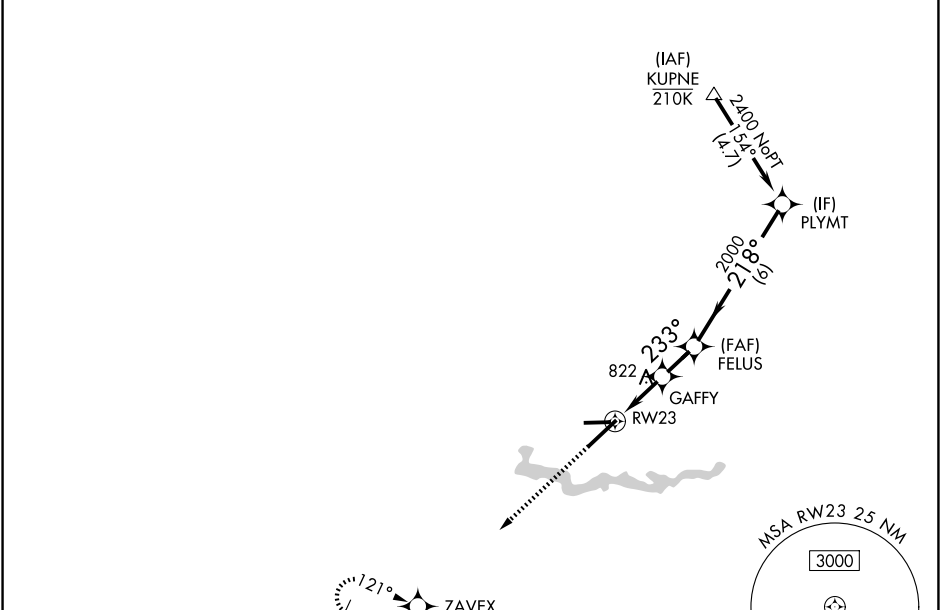
WAAS CH <b>65744</b> <b>W23A</b>	APP CRS <b>233°</b>	Rwy Ldg <b>7543</b> TDZE <b>710</b> Apt Elev <b>716</b>
--	------------------------	---

# RNAV (GPS) RWY 23

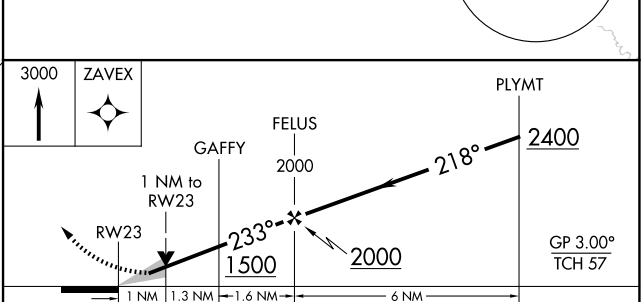
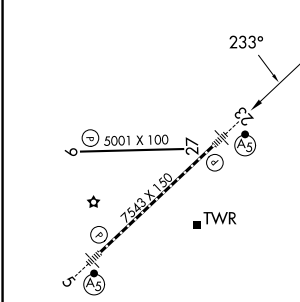
WILLOW RUN (YIP)

RNP APCH - GPS.	MALSR 	MISSED APPROACH: Climb to 3000 direct ZAVEX and hold, continue climb-in-hold to 3000.
 For uncompensated Baro-VNAV systems, procedure NA below -19°C or above 54°C. For inop ALS, increase LNAV/VNAV all Cats visibility to 7/8 SM, LNAV Cats C/D visibility to 1 SM.		

ATIS <b>127.425</b>	DETROIT APP CON <b>118.95 284.0</b>	WILLOW RUN TOWER <b>125.275 256.9</b>	GND CON <b>119.975</b>
------------------------	--	--	---------------------------



ELEV 716	<b>D</b>	TDZE 710
----------	----------	----------



CATEGORY	A	B	C	D
LPV DA		910-1/2	200 (200-1/2)	
LNAV/VNAV DA		982-1/2	272 (300-1/2)	
LNAV MDA	1080-1/2	370 (400-1/2)	1080-5/8	370 (400-5/8)
CIRCLING	1 220-1	504 (600-1)	1220-1 1/2 504 (600-1 1/2)	1400-2 1/4 684 (700-2 1/4)

TDZ/CL Rwy 5  
HIRL Rwy 5-23  
MIRL Rwy 9-27

EC-1, 11 JUN 2026 to 09 JUL 2026

EC-1, 11 JUN 2026 to 09 JUL 2026