

# RNAV (GPS) Y RWY 21L

DEKALB-PEACHTREE (PDK)

APP CRS <b>221°</b>	Rwy Ldg <b>4996</b>
	TDZE <b>991</b>
	Apt Elev <b>998</b>

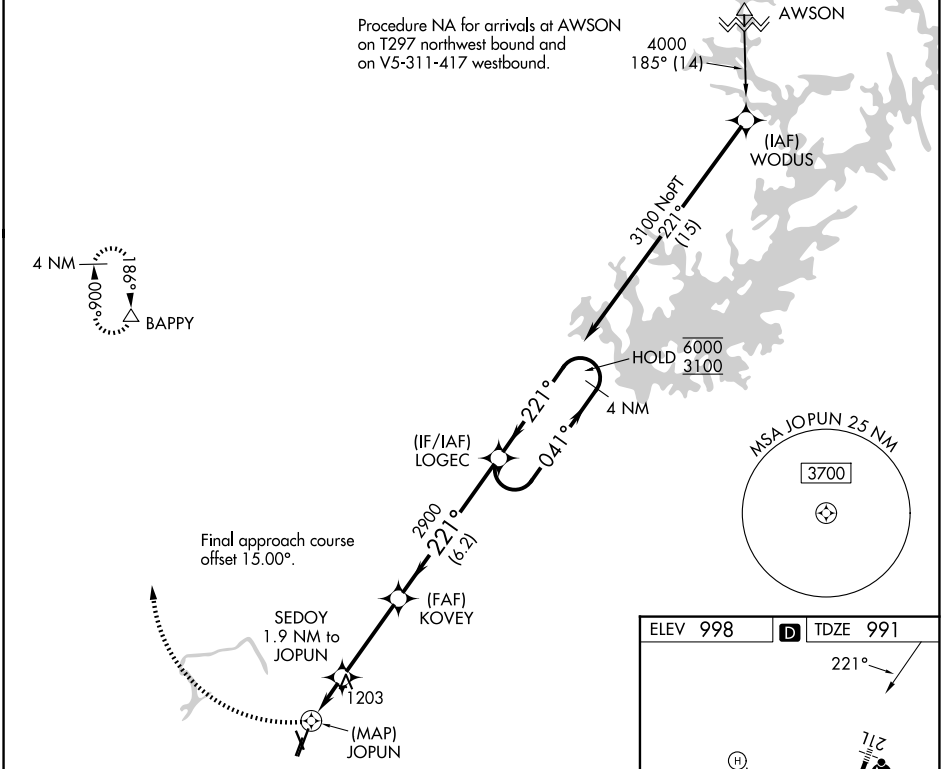
RNP APCH.

**⚠** Circling Rwy 16, 34 NA at night. Rwy 21L helicopter visibility reduction below 3/4 SM NA. For uncompensated Baro-VNAV systems, procedure NA below -8°C or above 54°C. For inop ALS, increase LNAV/VNAV all Cats visibility to 1 1/2 SM and LNAV Cat A/B visibility to RVR 5500.

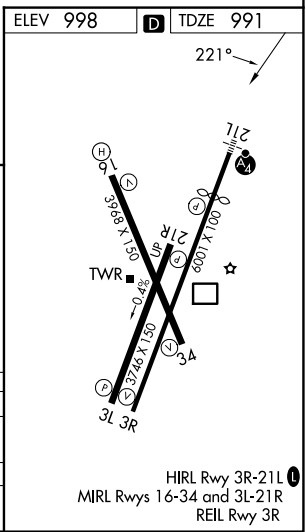
MALSF

MISSED APPROACH: Climbing right turn to 4000 direct BAPPY and hold.

ATIS <b>128.4</b>	ATLANTA APP CON <b>126.975 239.275</b>	PEACHTREE TOWER ★ <b>120.9 (CTAF) 281.5</b>	GND CON <b>121.6</b>	UNICOM <b>122.95</b>	<b>120.0</b>
----------------------	---	--	-------------------------	-------------------------	--------------



4000	BAPPY	SEDOY 1.9 NM to JOPUN	KOVEY 2900	LOGEC	4 NM Holding Pattern
*LNAV only.		*0.8 NM to JOPUN	1800*	2900	041° → 6000 ← 221° 3100
		0.5 0.8 NM	1.1 NM	3.5 NM	6.2 NM
CATEGORY	A	B	C	D	
LNAV/VNAV DA	1449/55		458 (500-1)		
LNAV MDA	1460/40	469 (500-3/4)	1460/60	469 (500-1 1/4)	
CIRCLING	1500-1	502 (600-1)	1840-2 1/2 842 (900-2 1/2)	2060-3 1062 (1100-3)	



SE-4, 11 JUN 2026 to 09 JUL 2026

SE-4, 11 JUN 2026 to 09 JUL 2026