

PERU, INDIANA

TACAN or VOR RWY 23

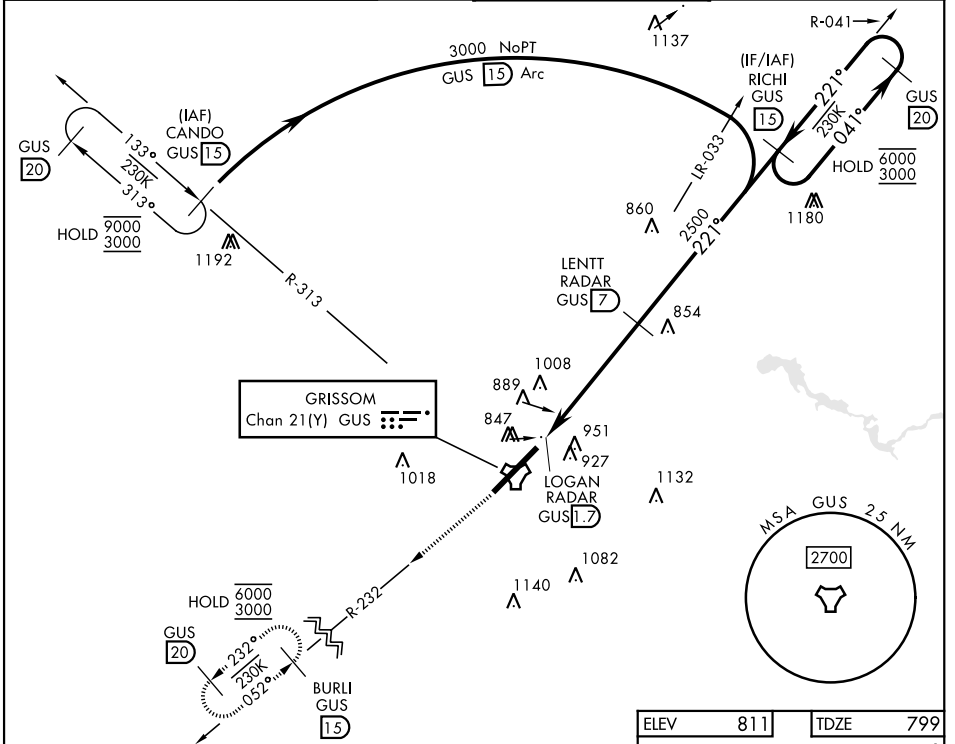
TACAN GUS Chan 21(Y)	APCH CRS 221°	Rwy Idg 12,501
		TDZE 799
		Arpt Elev 811

[USAF]

GRISSOM ARB (KGUS)

RADAR, DME required		ALSF-1 	MISSED APPROACH: Climb to 3000 on the GUS TACAN R-232 to BURLI and hold. Missed approach requires use of RNAV or ATC RADAR monitoring.
* When ALS inop, increase CAT AB RVR to 55 and vis to 1 mile; CAT CDE vis to 1 1/8 miles.			

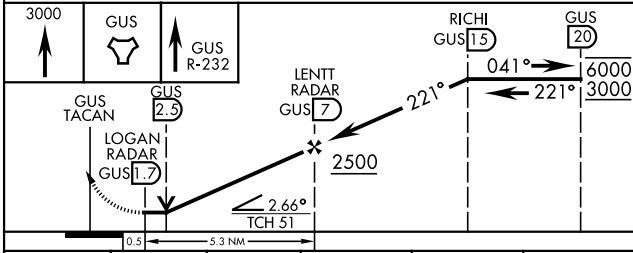
ATIS 132.55 270.8	APP CON 121.05 351.8 (E) 123.85 291.675 (W)	TOWER ★ 133.7 290.45	GND CON 128.425 275.8
----------------------	---	-------------------------	--------------------------



EC-2, 11 JUN 2026 to 09 JUL 2026

EC-2, 11 JUN 2026 to 09 JUL 2026

EMERG SAFE ALT 100 NM 3500



ELEV 811	TDZE 799												
HIRL Rwy 5-23													
FAF to MAP 5.3 NM													
<table border="1"> <tr> <th>Knots</th> <td>60</td> <td>90</td> <td>120</td> <td>150</td> <td>180</td> </tr> <tr> <th>Min:Sec</th> <td>5:18</td> <td>3:32</td> <td>2:39</td> <td>2:07</td> <td>1:46</td> </tr> </table>	Knots	60	90	120	150	180	Min:Sec	5:18	3:32	2:39	2:07	1:46	
Knots	60	90	120	150	180								
Min:Sec	5:18	3:32	2:39	2:07	1:46								

CATEGORY	A	B	C	D	E
S-23*	1260/24 461 (500-1/2)		1260/50 461 (500-1)		
CIRCLING	1340-1 529 (600-1)		1400-1 1/2 589 (600-1 1/2)	1400-2 589 (600-2)	1440-2 1/4 629 (700-2 1/4)

PERU, INDIANA

40°39'N-86°09'W

GRISSOM ARB (KGUS)

Amtd 7 11AUG22

TACAN or VOR RWY 23