

PERU, INDIANA

# TACAN or VOR RWY 5

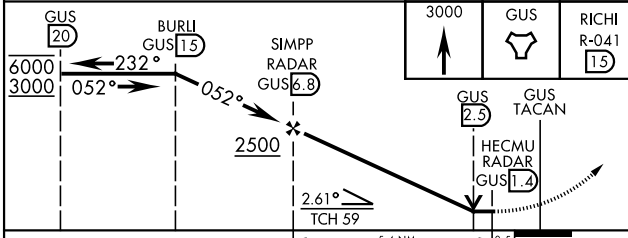
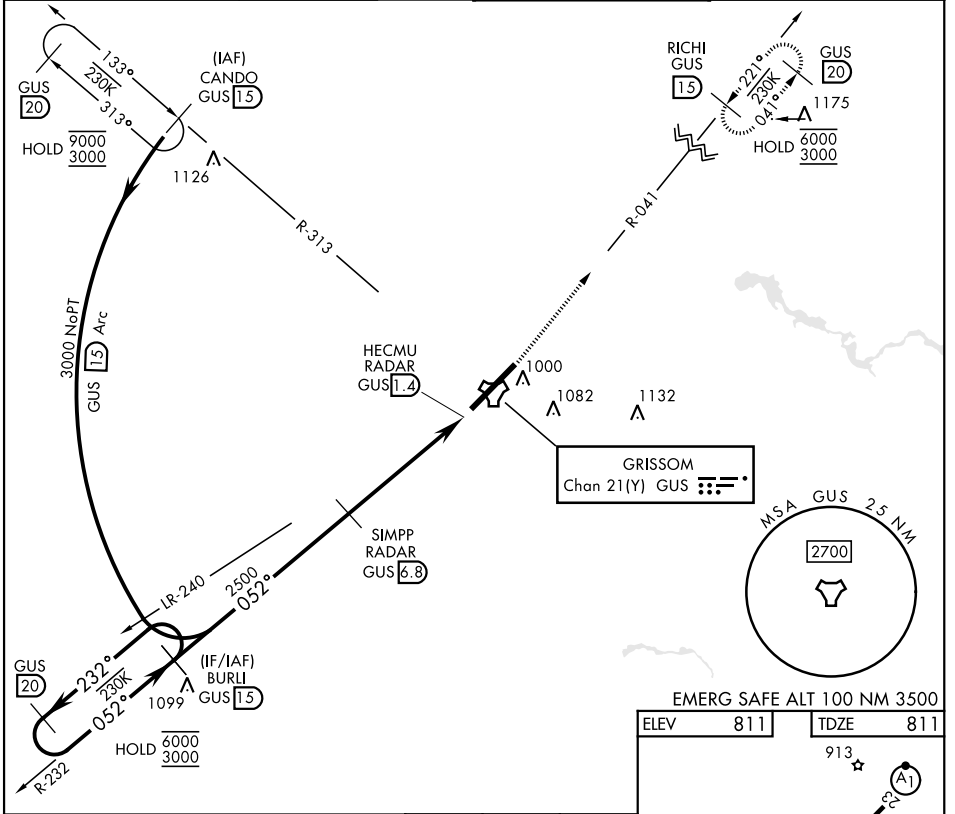
TACAN GUS Chan 21(Y)	APCH CRS 052°	Rwy Idg 12,501 TDZE 811 Arprt Elev 811
-------------------------	------------------	--

[USAF]

GRISSOM ARB (KGUS)

RADAR, DME required		ALSF-1 A1	MISSED APPROACH: Climb to 3000 on the GUS TACAN R-041 to RICHI and hold. Missed approach requires use of RNAV or ATC RADAR monitoring.
* When ALS inop, increase CAT AB RVR to 55 and vis to 1 mile; CAT CDE vis to 1 3/8 miles.			

ATIS 132.55 270.8	APP CON 121.05 351.8 (E) 123.85 291.675 (W)	TOWER ★ 133.7 290.45	GND CON 128.425 275.8
----------------------	---	-------------------------	--------------------------



ELEV 811		TDZE 811	
EMERG SAFE ALT 100 NM 3500			
913			
FAF to MAP 5.4 NM			
Knots		60	90 120 150 180
Min:Sec		5:24	3:36 2:42 2:10 1:48

CATEGORY	A	B	C	D	E
S-5 *	1280/24	469 (500-1/2)	1280/50	469	(500-1)
CIRCLING	1340-1	529 (600-1)	1400-1 1/2 589 (600-1 1/2)	1400-2 589 (600-2)	1440-2 1/4 629 (700-2 1/4)

PERU, INDIANA  
Amdt 9 14JUL22

40°39'N-86°09'W

GRISSOM ARB (KGUS)

# TACAN or VOR RWY 5

EC-2, 11 JUN 2026 to 09 JUL 2026

EC-2, 11 JUN 2026 to 09 JUL 2026