

CHERRY POINT, NORTH CAROLINA

COPTER TACAN RWY 23R

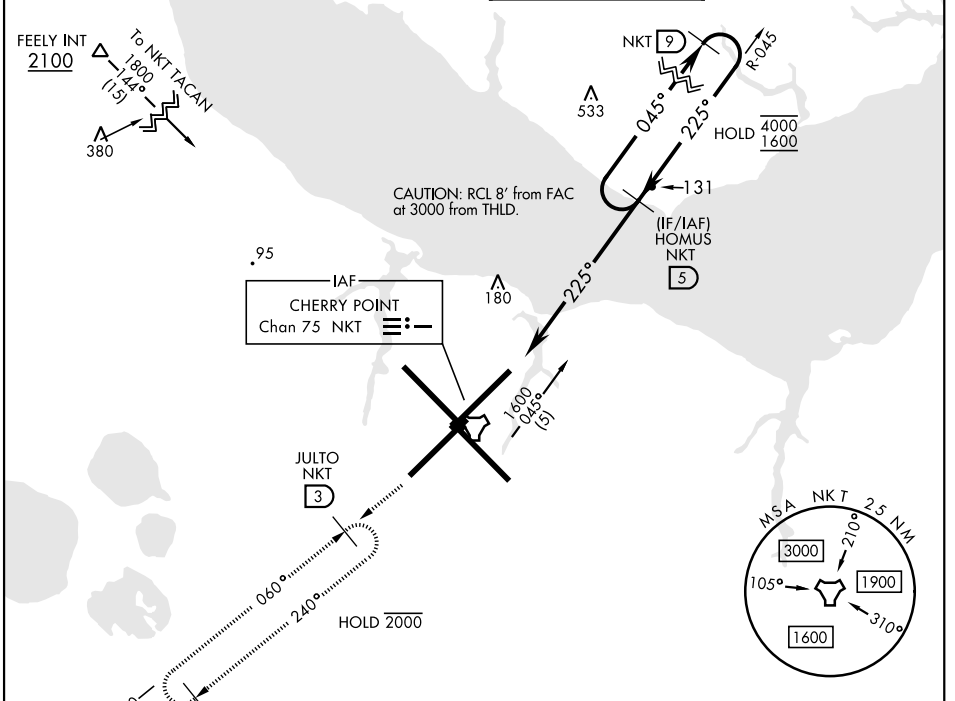
TACAN NKT Chan 75	APCH CRS 225°	Rwy ldg TDZE 23 Arprt Elev 29
----------------------	------------------	--

[USN]

CHERRY POINT MCAS (CUNNINGHAM FLD) (KNKT)

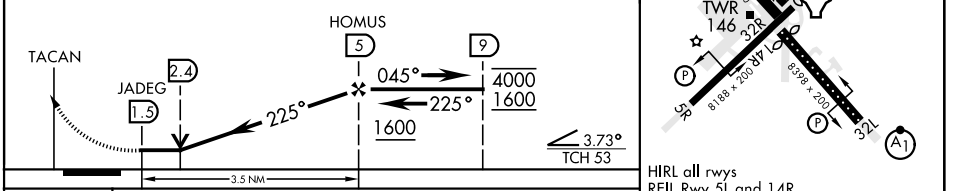
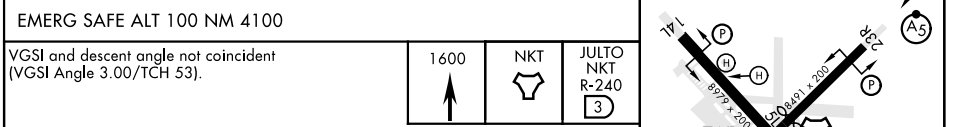
▼ * When ALS inop, increase vis to 1 mile. Max Airspeed 90 KIAS	MALSR A5	MISSED APPROACH: Climb to 1600 direct NKT TACAN and fly NKT R-240 to JULTO and hold.
--	-------------	--

ATIS 127.475 244.875	(E) 119.75 (E) 132.575 (W) 119.35	APP CON 360.775 (abv 2600') 299.6 (at/blw 2600') 377.175 (N) 124.1 268.7	TOWER 121.3 340.2	GND CON 128.625 239.025	CLNC DEL 125.95 316.125	ASR/ PAR
----------------------------	---	---	----------------------	-------------------------------	-------------------------------	-------------



ELEV 29	TDZE 23
---------	---------

Rwy 32R, 23L, 14R, 5L marked in center mat area.



CATEGORY	COPTER	
S-23R *	440-1/2	417 (500-1/2)

CHERRY POINT, NORTH CAROLINA 34°54'N-76°53'W CHERRY POINT MCAS (CUNNINGHAM FLD) (KNKT)

Amdt 8 02NOV23

COPTER TACAN RWY 23R

SE-2, 11 JUN 2026 to 09 JUL 2026

SE-2, 11 JUN 2026 to 09 JUL 2026