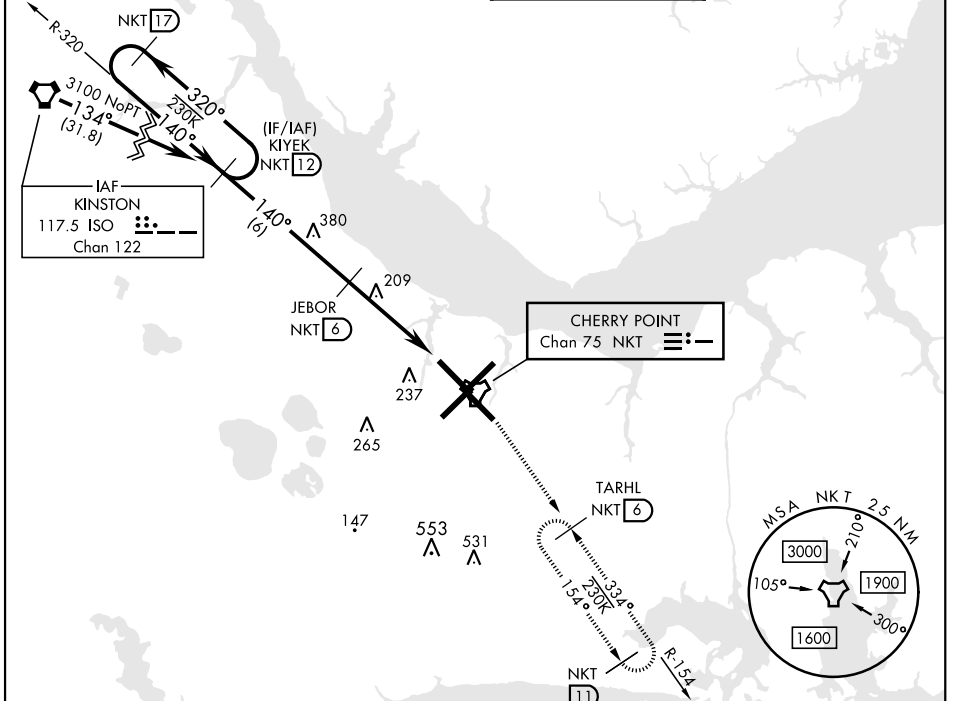


# TACAN Z RWY 14L

TACAN NKT Chan <b>75</b>	APCH CRS <b>140°</b>	Rwy ldg TDZE <b>26</b> Arprt Elev <b>29</b>	[UN]	CHERRY POINT MCAS (CUNNINGHAM FLD) (KNKT)
-----------------------------	-------------------------	---	------	---

**MISSSED APPROACH:** Climb to 1600 direct NKT TACAN and fly NKT R-154 to TARHL and hold.

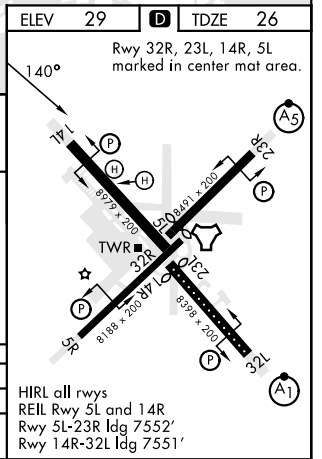
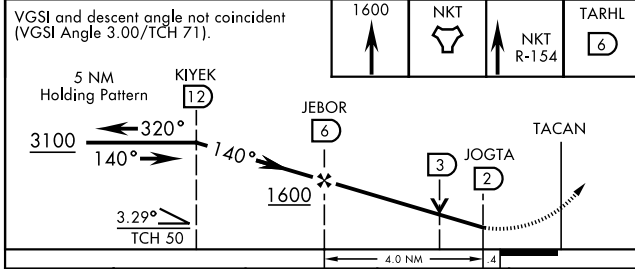
ATIS <b>127.475</b> <b>244.875</b>	(E) <b>119.75</b> (E) <b>132.575</b> (W) <b>119.35</b>	APP CON <b>360.775</b> (abv 2600') <b>299.6</b> (at/blw 2600') <b>377.175</b> (N) <b>124.1 268.7</b>	TOWER <b>121.3 340.2</b>	GND CON <b>128.625</b> <b>239.025</b>	CLNC DEL <b>125.95</b> <b>316.125</b>	ASR/ PAR
--	--	---	-----------------------------	---	---	-------------



ELEV	29	TDZE	26
------	----	------	----

EMERG SAFE ALT 100 NM 4100

Rwy 32R, 23L, 14R, 5L marked in center mat area.



CATEGORY	A	B	C	D
S-14L	500-1 474 (500-1)		500-1 3/8 474 (500-1 3/8)	580-2
CIRCLING	580-1 551 (600-1)		551 (600-1 1/2)	551 (600-2)

HIRL all rwys  
REIL Rwy 5L and 14R  
Rwy 5L-23R ldg 7552'  
Rwy 14R-32L ldg 7551'

# TACAN Z RWY 14L

SE-2, 11 JUN 2026 to 09 JUL 2026

SE-2, 11 JUN 2026 to 09 JUL 2026