

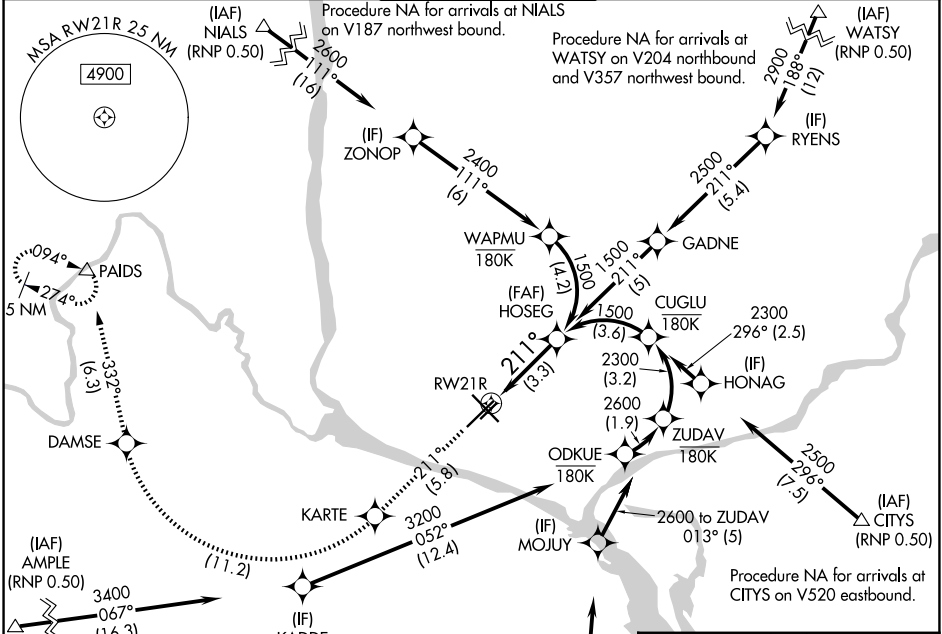
RNAV (RNP) Z RWY 21R TRI-CITIES (PSC)

APP CRS 211°	Rwy Ldg TDZE Apt Elev	7110 404 410
------------------------	-----------------------------	---

▽ For uncompensated Baro-VNAV systems, procedure NA below -14°C (7°F) or above 54°C (130°F). GPS required. RF required. For inoperative MALSR, increase RNP 0.11 all Cats visibility to RVR 5700 and RNP 0.30 all Cats visibility to 1½ mile.

MALSR
 MISSED APPROACH: Climb to 5200 on track 211° to KARTE, right turn to DAMSE, and on track 332° to PAIDS and hold.

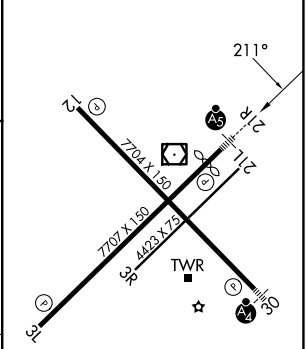
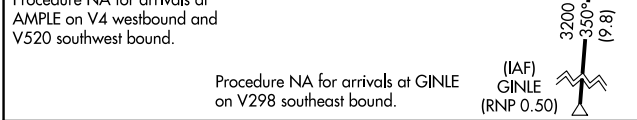
ATIS 125.65	SPOKANE APP CON * 128.75 377.2	TRI-CITIES TOWER * 135.3 (CTAF) 0 285.55	GND CON 121.8	UNICOM 122.95
-----------------------	--	--	-------------------------	-------------------------





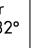


NW-1, 11 JUN 2026 to 09 JUL 2026

NW-1, 11 JUN 2026 to 09 JUL 2026

ELEV 410	D TDZE 404
----------	-------------------



5200	KARTE	DAMSE	tr 332°	PAIDS	HOSEG
tr 211°					

CATEGORY	A	B	C	D
RNP 0.11 DA		754/33	350 (400-¾)	
RNP 0.30 DA		832/48	428 (500-1)	

AUTHORIZATION REQUIRED

REIL Rwy 3L and 12 **Ⓛ**
MIRL Rwy 12-30 **Ⓛ**
HIRL Rwy 3L-21R **Ⓛ**