

WAAS CH 86605 W30A	APP CRS 301°	Rwy Ldg TDZE Apt Elev	7704 405 410
--	------------------------	-----------------------------	---

RNAV (GPS) Y RWY 30

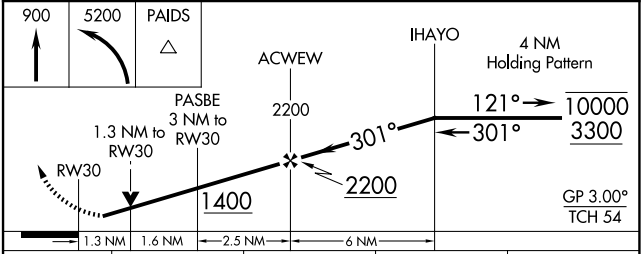
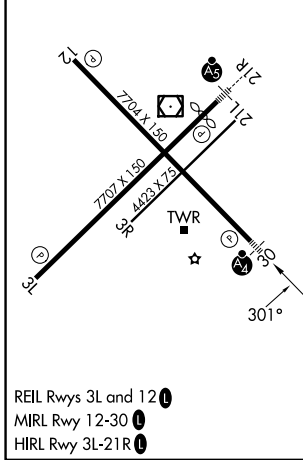
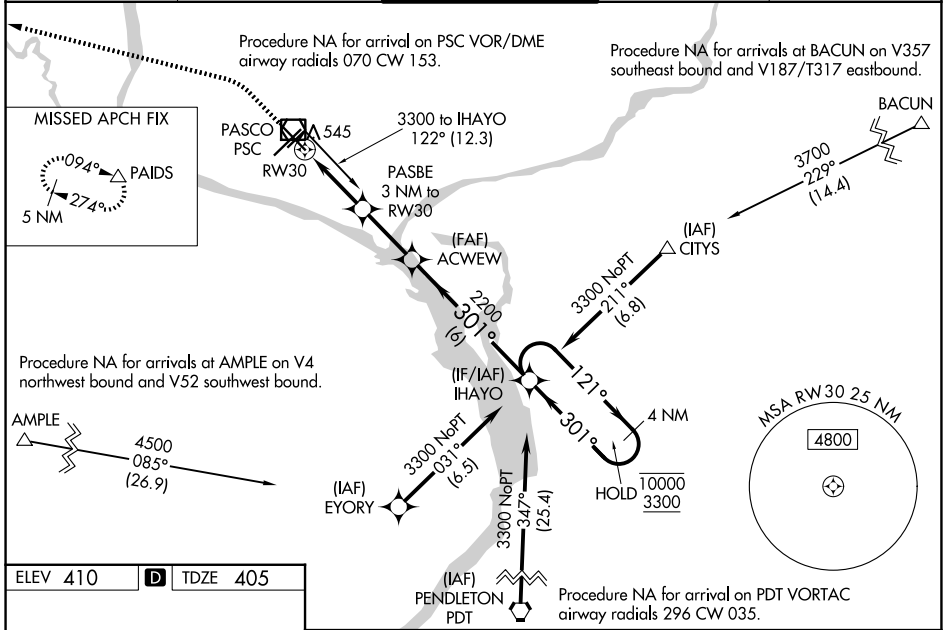
TRI-CITIES (PSC)

RNP APCH - GPS.

MAJ

MISSED APPROACH: Climb to 900 then climbing left turn to 5200 direct PAIDS and hold, continue climb-in-hold to 5200.

ATIS 125.65	SPOKANE APP CON * 128.75 377.2	TRI-CITIES TOWER* 135.3 (CTAF) 285.55	GND CON 121.8	UNICOM 122.95
-----------------------	--	--	-------------------------	-------------------------



CATEGORY	A	B	C	D
LPV DA		655- ³ / ₄	250 (300- ³ / ₄)	
LNAV/VNAV DA		793- ⁷ / ₈	388 (400- ⁷ / ₈)	
LNAV MDA	880- ³ / ₄	475 (500- ³ / ₄)	880-1 ¹ / ₈	475 (500-1 ¹ / ₈)
CIRCLING	900-1 490 (500-1)	940-1 530 (600-1)	1040-1 ³ / ₄ 630 (700-1 ³ / ₄)	1100-2 ¹ / ₄ 690 (700-2 ¹ / ₄)

NW-1, 11 JUN 2026 to 09 JUL 2026

NW-1, 11 JUN 2026 to 09 JUL 2026