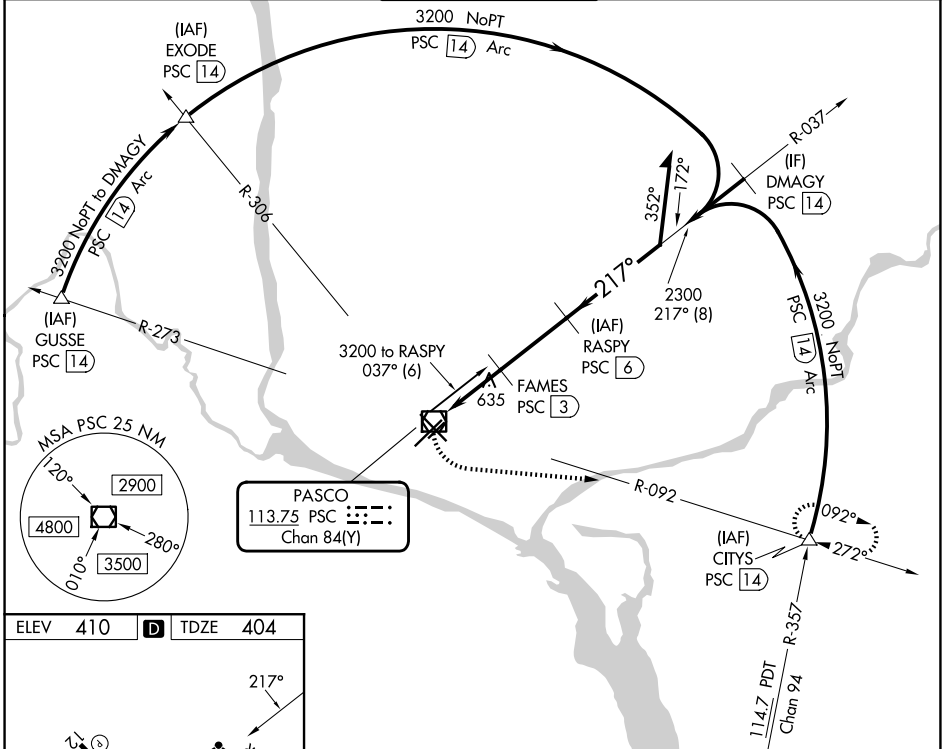


VOR/DME PSC 113.75 Chan 84(Y)	APP CRS 217°	Rwy Ldg 7110 TDZE 404 Apt Elev 410
---	------------------------	---

VOR RWY 21R

TRI-CITIES (PSC)

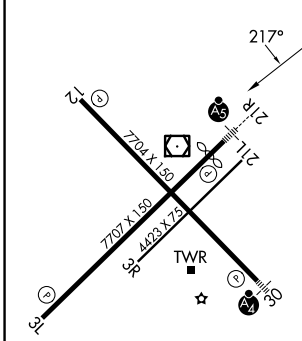
DME required.		MALSR 	MISSED APPROACH: Climbing left turn to 3200 on heading 080° and PSC VOR/DME R-092 PSC VOR/DME to CITYS INT/PSC 1.4 DME and hold.	
ATIS 125.65	SPOKANE APP CON* 128.75 377.2	TRI-CITIES TOWER* 135.3 (CTAF) 285.55	GND CON 121.8	UNICOM 122.95



NW-1, 11 JUN 2026 to 09 JUL 2026

NW-1, 11 JUN 2026 to 09 JUL 2026

ELEV 410	D	TDZE 404
----------	----------	----------



3200	PSC R-092	CITYS	RASPY PSC 6	Remain within 10 NM
hdg 080°				
	PSC VOR/DME	PSC 1.5	FAMES PSC 3	037°
				217°
				2300
				1360
				2.95° TCH 54
				1.4 NM 1.5 NM 3 NM
CATEGORY	A	B	C	D
S-21R	940/24	536 (600-½)	940/55	536 (600-1)
CIRCLING	940-1	530 (600-1)	1040-1¾ 630 (700-1¾)	1100-2¼ 690 (700-2¼)

- REIL Rwy 3L and 12
- MIRL Rwy 12-30
- HIRL Rwy 3L-21R

PASCO, WASHINGTON
Amdt 7A 05DEC19

46°16'N-119°07'W

TRI-CITIES (PSC) VOR RWY 21R