

VOR/DME PSC 113.75 Chan 84(Y)	APP CRS 307°	Rwy Ldg 7704 TDZE 405 Aprt Elev 410
---	------------------------	--

VOR RWY 30

TRI-CITIES(PSC)

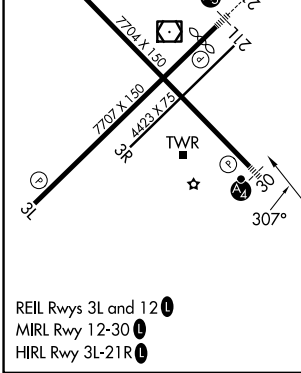
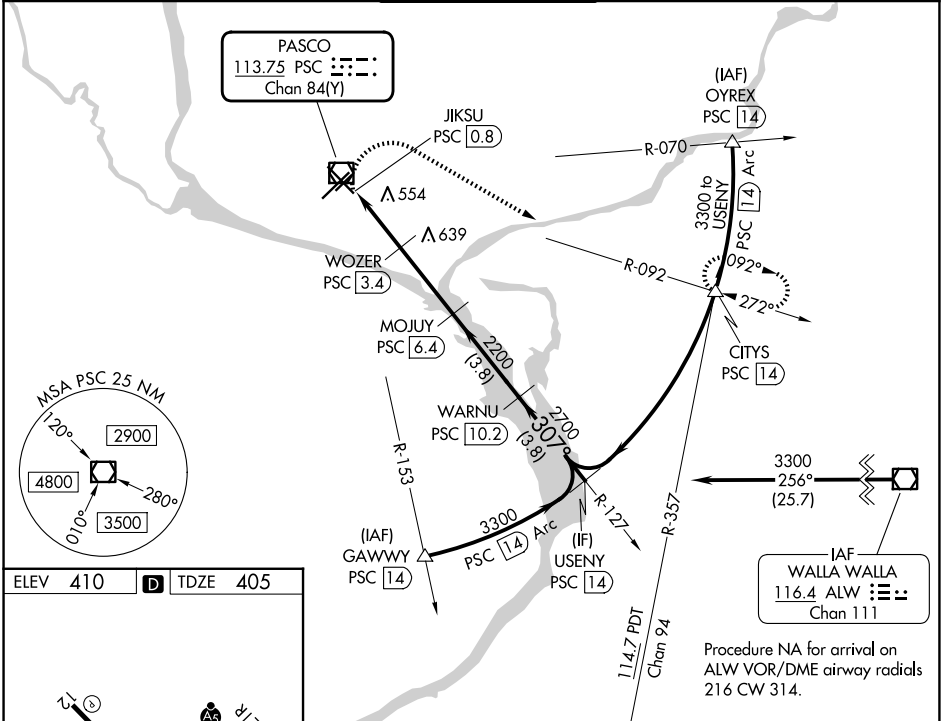
DME required.

⚠ VDP NA when using HRI altimeter setting. Rwy 30 helicopter visibility reduction below 3/4 SM NA. For inop ALS, increase S-30 Cats C and D visibility to 1 1/2 SM. When local climeter setting not received, use HRI altimeter setting and increase all MDAs 100 feet, increase S-30 visibility Cats C and D and Circling visibility Cats C and D 1/2 SM. For inop ALS when using HRI altimeter, increase S-30 Cats C and D visibility 1 1/2 SM.

MALSF

MISSED APPROACH: Climbing right turn to 3200 on heading 105° and PSC VOR/DME R-092 to CITIES/PSC 14 DME and hold.

ATIS 125.65	SPOKANE APP CON* 128.75 377.2	TRI-CITIES TOWER* 135.3 (CTAF) 285.55	GND CON 121.8	UNICOM 122.95
-----------------------	---	---	-------------------------	-------------------------



3200	PSC R-092	CITIES	WOZER PSC 3.4	MOJUJ PSC 6.4	WARNU PSC 10.2	USENY PSC 14
hdg 105°			JKSU PSC 0.8	2.92° TCH 54	2200	3300
			1.1 NM	1.5	3 NM	3.8 NM
307°						
2700						
1260						
CATEGORY	A	B	C	D		
S-30	820-3/4	415 (500-3/4)	820-1	415 (500-1)		
CIRCLING	900-1 490 (500-1)	940-1 530 (600-1)	1040-1 3/4 630 (700-1 3/4)	1100-2 1/4 690 (700-2 1/4)		

NW-1, 11 JUN 2026 to 09 JUL 2026

NW-1, 11 JUN 2026 to 09 JUL 2026