

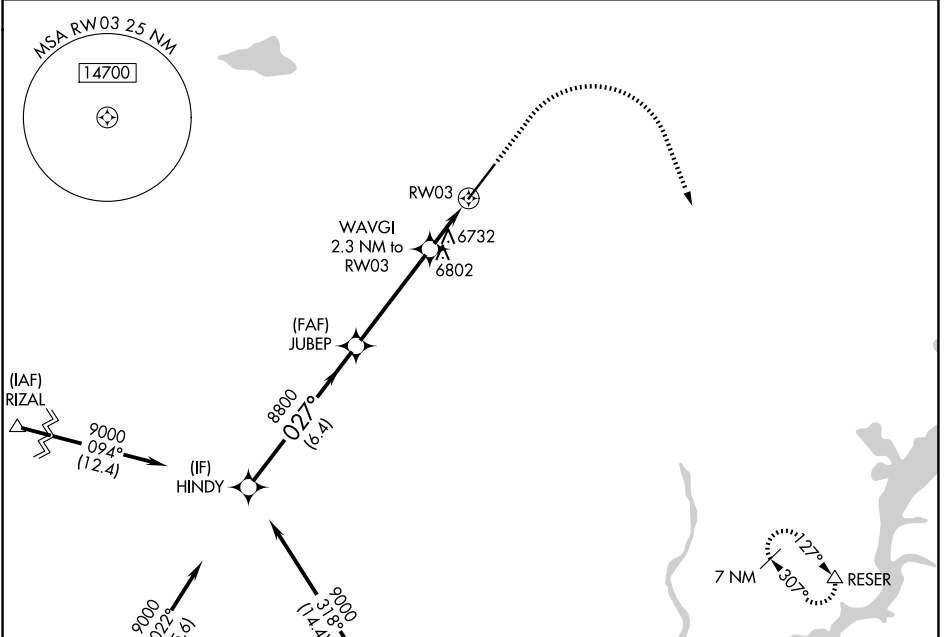
WAAS CH 53710 W03A	APP CRS 027°	Rwy Ldg TDZE Apt Elev	9201 6643 6689
--	------------------------	-----------------------------	---

RNAV (GPS) RWY 3

DURANGO-LA PLATA COUNTY (D.R.O)

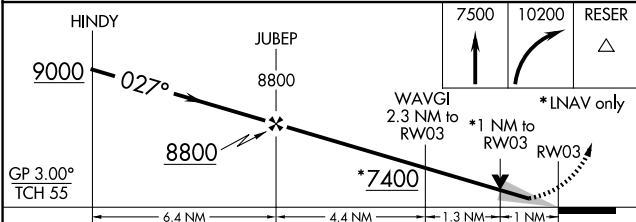
<p>⚠ For uncompensated Baro-VNAV systems, LNAV/VNAV NA below -26°C (-14°F) or above 44°C (111°F). DME/DME RNP-0.3 NA. For inop MALSR, increase LNAV Cat C/D visibility to 1 mile.</p>	<p>MALSR </p>	<p>MISSED APPROACH: Climb to 7500 then climbing right turn to 10200 direct RESER and hold.</p>
--	---------------	--

ASOS 120.625	DENVER CENTER 118.575 348.7	UNICOM 122.8 (CTAF) 📻
------------------------	---------------------------------------	--

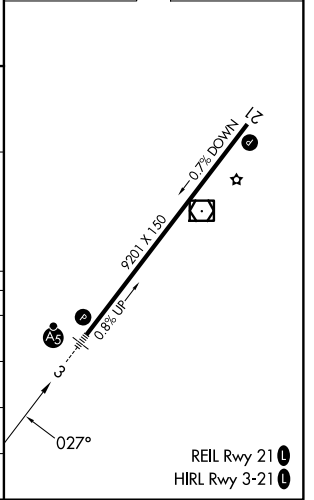


Procedure NA for arrivals on RSK VORTAC airway radials 316 CW 057.

ELEV 6689	D	TDZE 6643
-----------	----------	-----------



CATEGORY	A	B	C	D
LPV DA		6843-½	200 (200-½)	
LNAV/VNAV DA		6918-½	275 (300-½)	
LNAV MDA	7000-½	357 (400-½)	7000-⅝	357 (400-⅝)
CIRCLING	7160-1 471 (500-1)	7220-1 531 (600-1)	7540-2½ 851 (900-2½)	8140-3 1451 (1500-3)



SW-1, 11 JUN 2026 to 09 JUL 2026

SW-1, 11 JUN 2026 to 09 JUL 2026